

DNAJB11 Rabbit Polyclonal Antibody

Catalog No: #53463



Package Size: #53463-1 50ul #53463-2 100ul

Orders: order@signalwayantibody.comSupport: tech@signalwayantibody.com

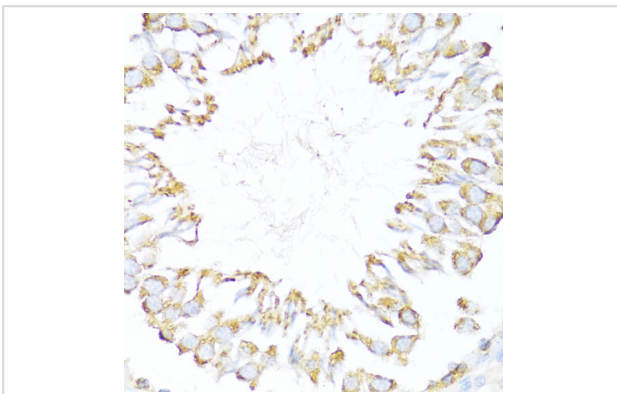
Description

| | |
|-----------------------|---|
| Product Name | DNAJB11 Rabbit Polyclonal Antibody |
| Host Species | Rabbit |
| Clonality | Polyclonal |
| Isotype | IgG |
| Purification | Affinity purification |
| Applications | WB,IHC |
| Species Reactivity | Human,Mouse,Rat |
| Immunogen Description | Recombinant fusion protein of human DNAJB11 (NP_057390.1). |
| Other Names | DNAJB11;ABBP-2;ABBP2;DJ9;Dj-9;EDJ;ERdj3;ERj3;ERj3p;PRO1080;UNQ537 |
| Accession No. | Swiss Prot:Q9UBS4GeneID:51726 |
| Calculated MW | 40kDa |
| SDS-PAGE MW | 40kDa |
| Formulation | Buffer: PBS with 0.02% sodium azide,50% glycerol,pH7.3. |
| Storage | Store at -20°C. Avoid freeze / thaw cycles. |

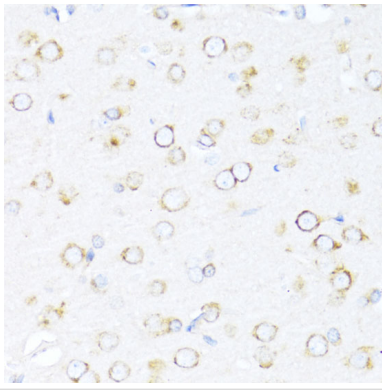
Application Details

WB □ 1:500 - 1:2000 IHC □ 1:50 - 1:200

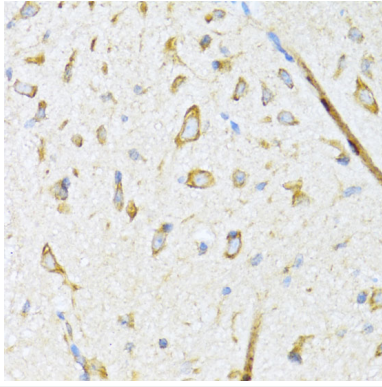
Images



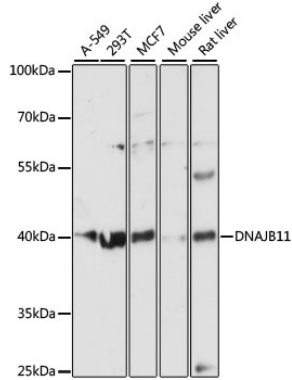
Immunohistochemistry of paraffin-embedded rat testis using DNAJB11 at dilution of 1:100 (40x lens).



Immunohistochemistry of paraffin-embedded rat brain using DNAJB11 at dilution of 1:100 (40x lens).



Immunohistochemistry of paraffin-embedded mouse spinal cord using DNAJB11 at dilution of 1:100 (40x lens).



Western blot analysis of extracts of various cell lines, using DNAJB11 at 1:3000 dilution.

Background

This gene encodes a soluble glycoprotein of the endoplasmic reticulum (ER) lumen that functions as a co-chaperone of binding immunoglobulin protein, a 70 kilodalton heat shock protein chaperone required for the proper folding and assembly of proteins in the ER. The encoded protein contains a highly conserved J domain of about 70 amino acids with a characteristic His-Pro-Asp (HPD) motif and may regulate the activity of binding immunoglobulin protein by stimulating ATPase activity.

Note: This product is for in vitro research use only and is not intended for use in humans or animals.