

ERRFI1 Rabbit Polyclonal Antibody

Catalog No: #29579

Package Size: #29579-1 50ul #29579-2 100ul

Orders: order@signalwayantibody.comSupport: tech@signalwayantibody.com

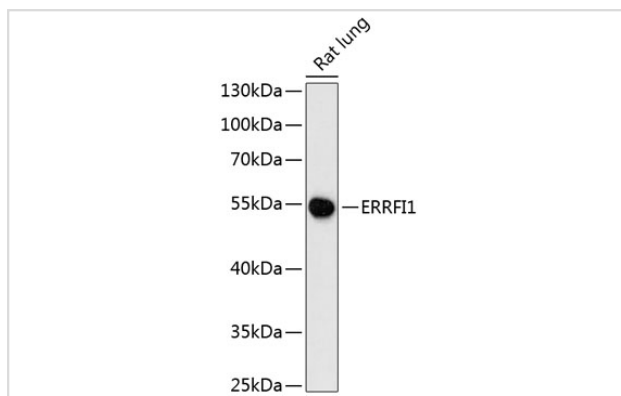
Description

| | |
|-----------------------|---|
| Product Name | ERRFI1 Rabbit Polyclonal Antibody |
| Host Species | Rabbit |
| Clonality | Polyclonal |
| Isotype | IgG |
| Purification | Affinity purification |
| Applications | WB |
| Species Reactivity | Rat |
| Immunogen Description | Recombinant fusion protein of human ERRFI1 (NP_061821.1). |
| Other Names | ERRFI1;GENE-33;MIG-6;MIG6;RALT |
| Accession No. | Swiss Prot:Q9UJM3GeneID:54206 |
| Calculated MW | 50kDa |
| SDS-PAGE MW | 50kDa |
| Formulation | Buffer: PBS with 0.02% sodium azide,50% glycerol,pH7.3. |
| Storage | Store at -20°C. Avoid freeze / thaw cycles. |

Application Details

WB □ 1:500 - 1:2000

Images



Western blot analysis of extracts of rat lung, using ERRFI1 at 1:3000 dilution.

Background

-

Note: This product is for in vitro research use only and is not intended for use in humans or animals.