

DNASE1L1 Rabbit Polyclonal Antibody

Catalog No: #53513



Package Size: #53513-1 50ul #53513-2 100ul

Orders: order@signalwayantibody.com

Support: tech@signalwayantibody.com

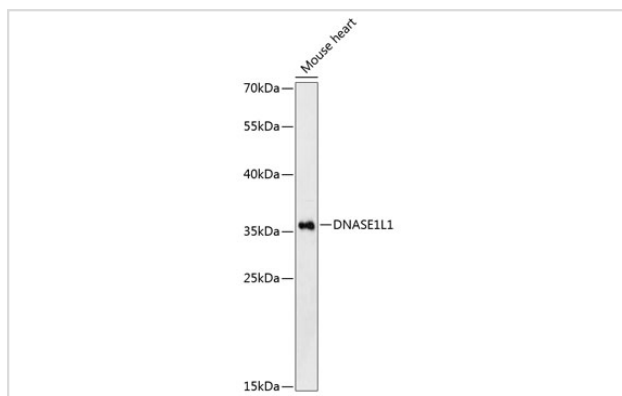
Description

Product Name	DNASE1L1 Rabbit Polyclonal Antibody
Host Species	Rabbit
Clonality	Polyclonal
Isotype	IgG
Purification	Affinity purification
Applications	WB,IF
Species Reactivity	Mouse,Rat
Immunogen Description	Recombinant fusion protein of human DNASE1L1 (NP_006721.1).
Other Names	DNASE1L1;DNAS1L1;DNASEX;DNL1L;G4.8;XIB
Accession No.	Swiss Prot:P49184GeneID:1774
Calculated MW	33kDa
SDS-PAGE MW	34kDa
Formulation	Buffer: PBS with 0.02% sodium azide,50% glycerol,pH7.3.
Storage	Store at -20°C. Avoid freeze / thaw cycles.

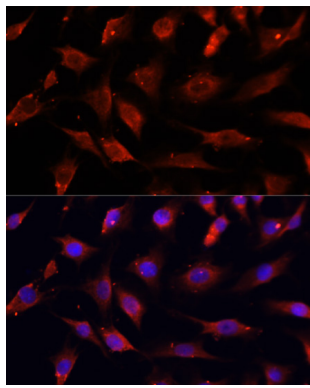
Application Details

WB □ 1:500 - 1:2000 IF □ 1:50 - 1:200

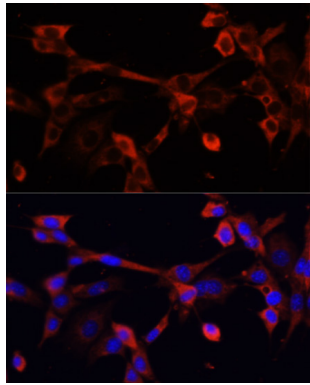
Images



Western blot analysis of extracts of mouse heart, using DNASE1L1 at 1:3000 dilution.



Immunofluorescence analysis of C6 cells using DNASE1L1 at dilution of 1:100. Blue: DAPI for nuclear staining.



Immunofluorescence analysis of NIH/3T3 cells using DNASE1L1 at dilution of 1:100. Blue: DAPI for nuclear staining.

Background

This gene encodes a deoxyribonuclease protein that shows high sequence similarity to DNase I. The encoded protein is localized to the endoplasmic reticulum and modified by N-linked glycosylation. Alternate transcriptional splice variants encoding the same protein have been observed.

Note: This product is for in vitro research use only and is not intended for use in humans or animals.