

LRAT Rabbit Polyclonal Antibody

Catalog No: #53533



Package Size: #53533-1 50ul #53533-2 100ul

Orders: order@signalwayantibody.comSupport: tech@signalwayantibody.com

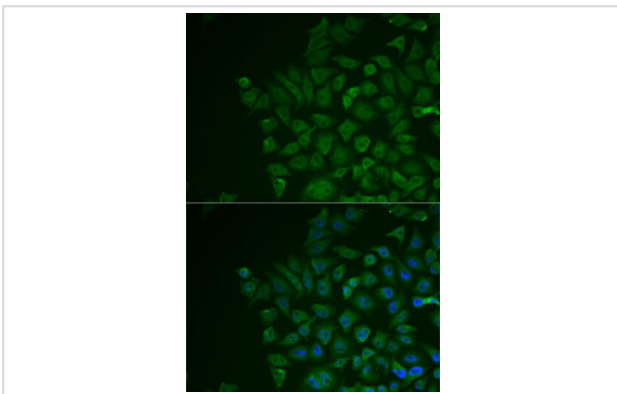
Description

Product Name	LRAT Rabbit Polyclonal Antibody
Host Species	Rabbit
Clonality	Polyclonal
Isotype	IgG
Purification	Affinity purification
Applications	WB,IF
Species Reactivity	Human,Mouse,Rat
Immunogen Description	Recombinant fusion protein of human LRAT (NP_004735.2).
Other Names	LRAT;LCA14
Accession No.	Swiss Prot:O95237GeneID:9227
Calculated MW	25kDa
SDS-PAGE MW	26-55kDa
Formulation	Buffer: PBS with 0.02% sodium azide,50% glycerol,pH7.3.
Storage	Store at -20°C. Avoid freeze / thaw cycles.

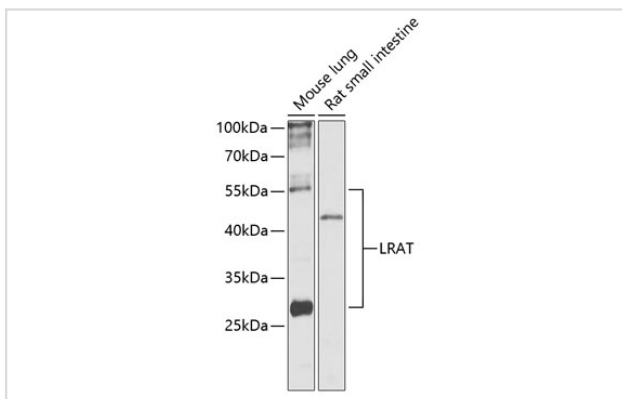
Application Details

WB □ 1:1000 - 1:2000 IF □ 1:50 - 1:200

Images



Immunofluorescence analysis of MCF7 cells using LRAT .
Blue: DAPI for nuclear staining.



Western blot analysis of extracts of various cell lines, using Lrat at 1:1000 dilution.

Background

The protein encoded by this gene localizes to the endoplasmic reticulum, where it catalyzes the esterification of all-trans-retinol into all-trans-retinyl ester. This reaction is an important step in vitamin A metabolism in the visual system. Mutations in this gene have been associated with early-onset severe retinal dystrophy and Leber congenital amaurosis 14. Alternative splicing results in multiple transcript variants.

Note: This product is for in vitro research use only and is not intended for use in humans or animals.