

ASGR1 Rabbit Polyclonal Antibody

Catalog No: #29577

Package Size: #29577-1 50ul #29577-2 100ul

Orders: order@signalwayantibody.com

Support: tech@signalwayantibody.com

Description

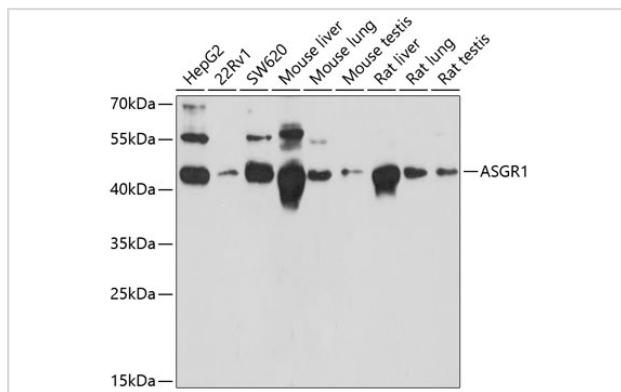
Product Name	ASGR1 Rabbit Polyclonal Antibody
Host Species	Rabbit
Clonality	Polyclonal
Isotype	IgG
Purification	Affinity purification
Applications	WB,IHC-P,IF
Species Reactivity	Human,Mouse,Rat
Immunogen Description	Recombinant protein of human ASGR1
Other Names	ASGR1;ASGPR;ASGPR1;CLEC4H1;HL-1
Accession No.	Swiss Prot:P07306GeneID:432
Calculated MW	29kDa/33kDa
SDS-PAGE MW	45kDa
Formulation	Buffer: PBS with 0.02% sodium azide,50% glycerol,pH7.3.
Storage	Store at -20°C. Avoid freeze / thaw cycles.

Application Details

WB 1:500 - 1:2000

IHC_o 1:50 - 1:200IF_o 1:50 - 1:200

Images



Western blot analysis of extracts of various cell lines, using ASGR1 at 1:1000 dilution.

Background

This gene encodes a subunit of the asialoglycoprotein receptor. This receptor is a transmembrane protein that plays a critical role in serum glycoprotein homeostasis by mediating the endocytosis and lysosomal degradation of glycoproteins with exposed terminal galactose or N-acetylgalactosamine residues. The asialoglycoprotein receptor may facilitate hepatic infection by multiple viruses including hepatitis B, and is also a

target for liver-specific drug delivery. The asialoglycoprotein receptor is a hetero-oligomeric protein composed of major and minor subunits, which are encoded by different genes. The protein encoded by this gene is the more abundant major subunit. Alternatively spliced transcript variants encoding multiple isoforms have been observed for this gene.

Note: This product is for in vitro research use only and is not intended for use in humans or animals.