

Desmoplakin Rabbit Polyclonal Antibody

Catalog No: #53548

Package Size: #53548-1 50ul #53548-2 100ul

Orders: order@signalwayantibody.comSupport: tech@signalwayantibody.com

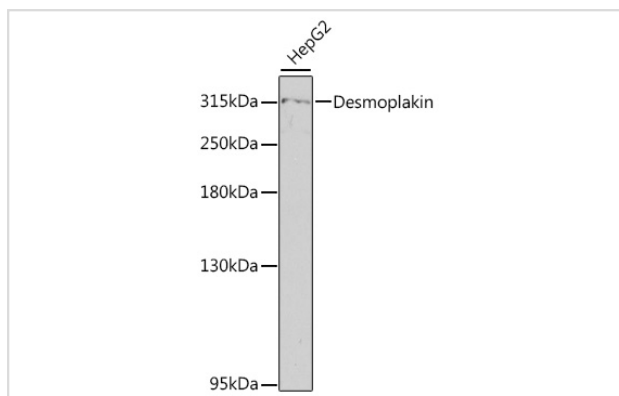
Description

Product Name	Desmoplakin Rabbit Polyclonal Antibody
Host Species	Rabbit
Clonality	Polyclonal
Isotype	IgG
Purification	Affinity purification
Applications	WB
Species Reactivity	Human,Mouse
Immunogen Description	A synthetic peptide of human Desmoplakin (NP_004406.2).
Other Names	DCWHKTA;DP;DSP
Accession No.	Uniprot:P15924GeneID:1832
Calculated MW	260kDa/278kDa/331kDa
SDS-PAGE MW	315kDa
Formulation	PBS with 0.02% sodium azide,50% glycerol,pH7.3.
Storage	Store at -20°C. Avoid freeze / thaw cycles.

Application Details

WB □ 1:500 - 1:2000

Images



Western blot analysis of extracts of HepG2 cells, using Desmoplakin antibody.

Background

This gene encodes a protein that anchors intermediate filaments to desmosomal plaques and forms an obligate component of functional desmosomes. Mutations in this gene are the cause of several cardiomyopathies and keratodermas, including skin fragility-woolly hair syndrome. Alternative splicing results in multiple transcript variants.

Note: This product is for in vitro research use only and is not intended for use in humans or animals.