

NALP1 Antibody

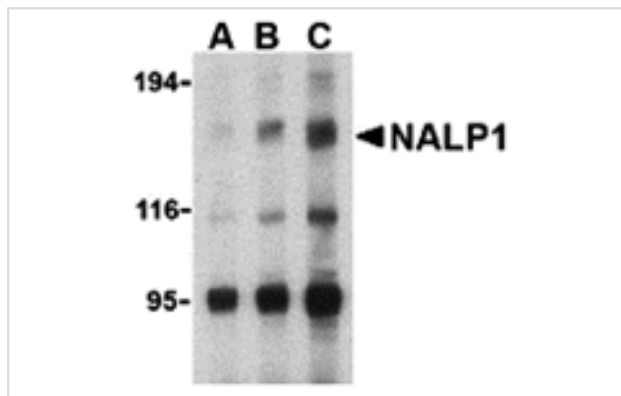
Catalog No: #24173

Orders: order@signalwayantibody.comSupport: tech@signalwayantibody.com

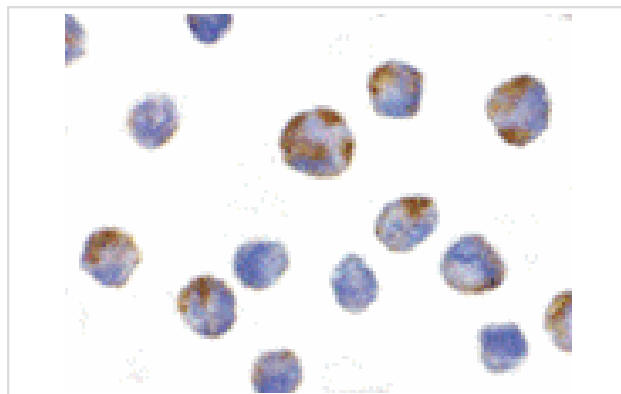
Description

Product Name	NALP1 Antibody
Host Species	Rabbit
Clonality	Polyclonal
Purification	Immunoaffinity chromatography purified IgG
Applications	ELISA WB ICC
Species Reactivity	Hu
Immunogen Type	Peptide
Immunogen Description	Raised against a peptide corresponding to 13 amino acids near the carboxy terminus of human NALP1.
Target Name	NALP1
Other Names	CARD7, DEFCAP, NACHT domain- leucine-rich-repeat and PYD-containing protein 1
Accession No.	AAG30288
Concentration	1mg/ml
Formulation	Supplied in PBS containing 0.02% sodium azide.
Storage	Can be stored at -20°C, stable for one year. As with all antibodies care should be taken to avoid repeated freeze thaw cycles. Antibodies should not be exposed to prolonged high temperatures.

Images



Western blot analysis of NALP1 in U937 cell lysate with NALP1 antibody at (A) 1, (B) 2 and (C) 4 ug/mL.



Immunocytochemistry of NALP1 in K562 cells with NALP1 antibody at 10 ug/mL.

Background

NALP1 belongs to a family of cytoplasmic proteins that have been implicated in cell responses to apoptotic and inflammatory stimuli. It contains a caspase recruitment domain (CARD) in addition to a NACHT domain and leucine rich repeat (LRR). This protein interacts strongly with caspase 2 and weakly with caspase 9, as well as with Apaf-1. Transient overexpression of this gene in cultured cells was sufficient to induce apoptosis. NALP1 mRNA and protein expression levels in myeloid leukemia cells are increased following CREB (cAMP-response element binding protein) activation, suggesting that NALP1 may contribute to modulate the response of these cells to pro-inflammatory stimuli. Multiple alternatively spliced transcript variants encoding distinct isoforms have been found for NALP1.

Note: This product is for in vitro research use only and is not intended for use in humans or animals.