

NEK2 Rabbit Polyclonal Antibody

Catalog No: #53562

Package Size: #53562-1 50ul #53562-2 100ul

Orders: order@signalwayantibody.com

Support: tech@signalwayantibody.com

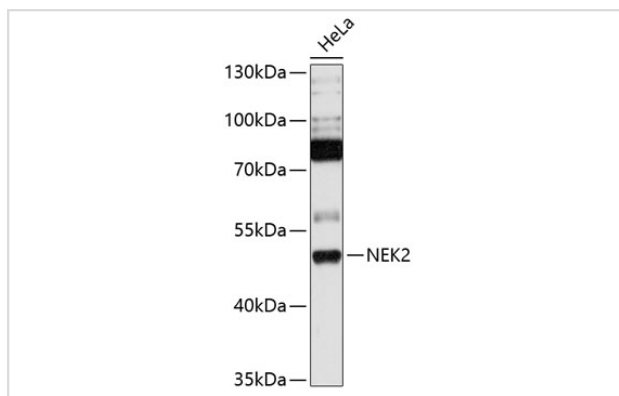
Description

Product Name	NEK2 Rabbit Polyclonal Antibody
Host Species	Rabbit
Clonality	Polyclonal
Isotype	IgG
Purification	Affinity purification
Applications	WB,IHC
Species Reactivity	Human,Rat
Immunogen Description	A synthetic peptide of human NEK2 (NP_002488.1).
Other Names	NEK2;HsPK21;NEK2A;NLK1;PPP1R111;RP67
Accession No.	Swiss Prot:P51955GeneID:4751
Calculated MW	37kDa/44kDa/50kDa/51kDa
SDS-PAGE MW	52kDa
Formulation	Buffer: PBS with 0.02% sodium azide,50% glycerol,pH7.3.
Storage	Store at -20°C. Avoid freeze / thaw cycles.

Application Details

WB □ 1:2000 - 1:5000 IHC □ 1:50 - 1:200

Images



Western blot analysis of extracts of HeLa cells, using NEK2 at 1:1000 dilution.

Background

This gene encodes a serine/threonine-protein kinase that is involved in mitotic regulation. This protein is localized to the centrosome, and undetectable during G1 phase, but accumulates progressively throughout the S phase, reaching maximal levels in late G2 phase. Alternatively spliced transcript variants encoding different isoforms with distinct C-termini have been noted for this gene.

Note: This product is for in vitro research use only and is not intended for use in humans or animals.