

DRD4 Rabbit Polyclonal Antibody

Catalog No: #53581

Package Size: #53581-1 50ul #53581-2 100ul

Orders: order@signalwayantibody.comSupport: tech@signalwayantibody.com

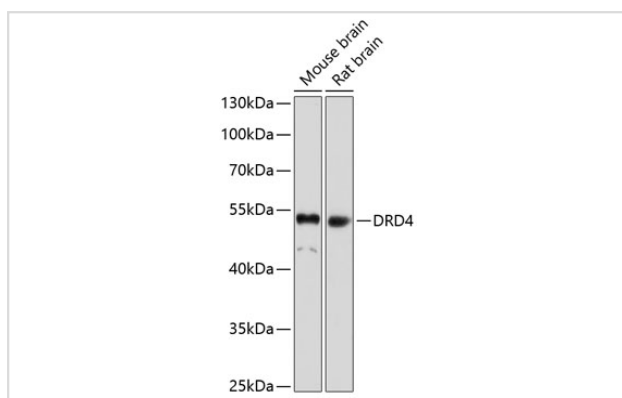
Description

Product Name	DRD4 Rabbit Polyclonal Antibody
Host Species	Rabbit
Clonality	Polyclonal
Isotype	IgG
Purification	Affinity purification
Applications	WB,IHC
Species Reactivity	Mouse,Rat
Immunogen Description	A synthetic peptide of human DRD4 (NP_000788.2).
Other Names	DRD4;D4DR
Accession No.	Swiss Prot:P21917GeneID:1815
Calculated MW	48kDa
SDS-PAGE MW	52kDa
Formulation	Buffer: PBS with 0.02% sodium azide,50% glycerol,pH7.3.
Storage	Store at -20°C. Avoid freeze / thaw cycles.

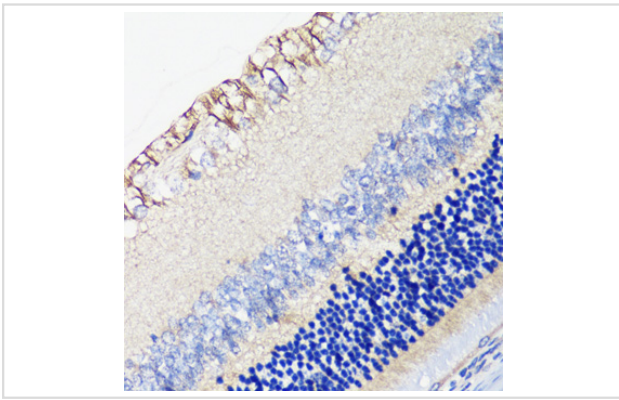
Application Details

WB □ 1:500 - 1:1000 IHC □ 1:50 - 1:200

Images



Western blot analysis of extracts of various cell lines, using DRD4 at 1:1000 dilution.



Immunohistochemistry of paraffin-embedded rat retina using DRD4 at dilution of 1:100 (40x lens).

Background

This gene encodes the D4 subtype of the dopamine receptor. The D4 subtype is a G-protein coupled receptor which inhibits adenylyl cyclase. It is a target for drugs which treat schizophrenia and Parkinson disease. Mutations in this gene have been associated with various behavioral phenotypes, including autonomic nervous system dysfunction, attention deficit/hyperactivity disorder, and the personality trait of novelty seeking. This gene contains a polymorphic number (2-10 copies) of tandem 48 nt repeats; the sequence shown contains four repeats.

Note: This product is for in vitro research use only and is not intended for use in humans or animals.