

UBIAD1 Rabbit Polyclonal Antibody

Catalog No: #53595

Package Size: #53595-1 50ul #53595-2 100ul

Orders: order@signalwayantibody.comSupport: tech@signalwayantibody.com

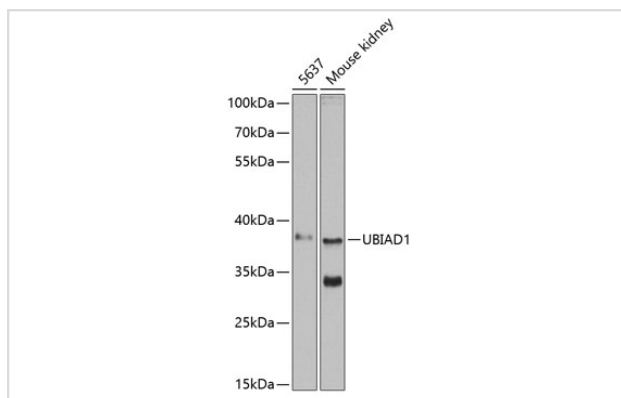
Description

| | |
|-----------------------|--|
| Product Name | UBIAD1 Rabbit Polyclonal Antibody |
| Host Species | Rabbit |
| Clonality | Polyclonal |
| Isotype | IgG |
| Purification | Affinity purification |
| Applications | WB |
| Species Reactivity | Human,Mouse |
| Immunogen Description | A synthetic peptide of human UBIAD1 (NP_037451.1). |
| Other Names | UBIAD1;SCCD;TERE1 |
| Accession No. | Uniprot:Q9Y5Z9GeneID:29914 |
| Calculated MW | 19kDa/36kDa |
| SDS-PAGE MW | 37kDa |
| Formulation | PBS with 0.02% sodium azide,50% glycerol,pH7.3. |
| Storage | Store at -20°C. Avoid freeze / thaw cycles. |

Application Details

WB □ 1:500 - 1:2000

Images



Western blot analysis of extracts of various cell lines, using UBIAD1 antibody.

Background

This gene encodes a protein thought to be involved in cholesterol and phospholipid metabolism. Mutations in this gene are associated with Schnyder crystalline corneal dystrophy.

Note: This product is for in vitro research use only and is not intended for use in humans or animals.