

NRBF2 Rabbit Polyclonal Antibody

Catalog No: #53596



Package Size: #53596-1 50ul #53596-2 100ul

Orders: order@signalwayantibody.comSupport: tech@signalwayantibody.com

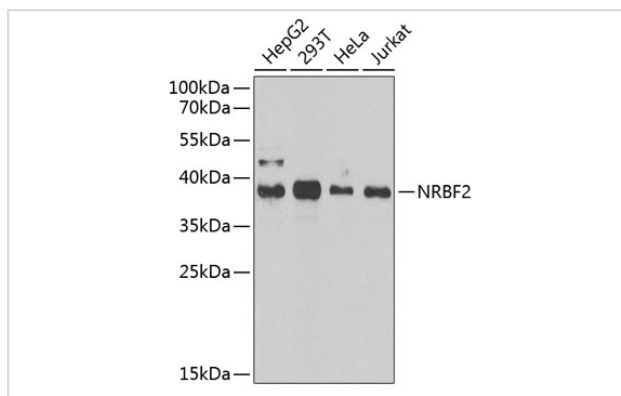
Description

Product Name	NRBF2 Rabbit Polyclonal Antibody
Host Species	Rabbit
Clonality	Polyclonal
Isotype	IgG
Purification	Affinity purification
Applications	WB,IHC,IF
Species Reactivity	Human,Mouse,Rat
Immunogen Description	Recombinant fusion protein of human NRBF2 (NP_110386.2).
Other Names	NRBF2;COPR;COPR1;COPR2;NRBF-2
Accession No.	Swiss Prot:Q96F24GeneID:29982
Calculated MW	26kDa/31kDa/32kDa
SDS-PAGE MW	38kDa
Formulation	Buffer: PBS with 0.02% sodium azide,50% glycerol,pH7.3.
Storage	Store at -20°C. Avoid freeze / thaw cycles.

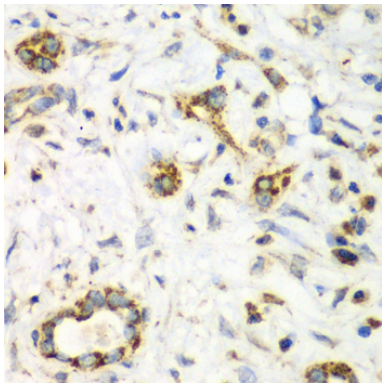
Application Details

WB □ 1:500 - 1:2000 IHC □ 1:50 - 1:200 IF □ 1:50 - 1:200

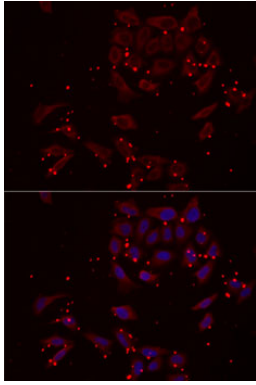
Images



Western blot analysis of extracts of various cell lines, using NRBF2 at 1:1000 dilution.



Immunohistochemistry of paraffin-embedded human liver cancer using NRBF2 at dilution of 1:100 (40x lens).



Immunofluorescence analysis of MCF7 cells using NRBF2 .
Blue: DAPI for nuclear staining.

Background

-

Note: This product is for in vitro research use only and is not intended for use in humans or animals.