

## EGF Rabbit Polyclonal Antibody

Catalog No: #53677

Package Size: #53677-1 50ul #53677-2 100ul

Orders: order@signalwayantibody.com

Support: tech@signalwayantibody.com

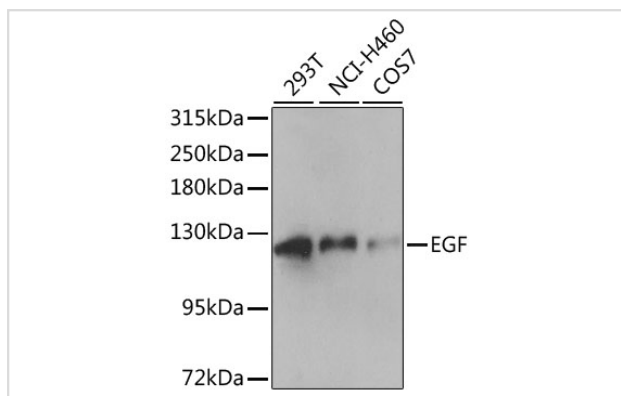
## Description

Product Name	EGF Rabbit Polyclonal Antibody
Host Species	Rabbit
Clonality	Polyclonal
Isotype	IgG
Purification	Affinity purification
Applications	WB,IF
Species Reactivity	Human,Mouse,Rat
Immunogen Description	A synthetic peptide of human EGF (NP_001954.2).
Other Names	EGF;HOMG4;URG
Accession No.	Swiss Prot:P01133GeneID:1950
Calculated MW	129kDa/133kDa
SDS-PAGE MW	134kDa
Formulation	Buffer: PBS with 0.02% sodium azide,50% glycerol,pH7.3.
Storage	Store at -20°C. Avoid freeze / thaw cycles.

## Application Details

WB □ 1:500 - 1:2000 IF □ 1:50 - 1:200

## Images



Western blot analysis of extracts of various cell lines, using EGF at 1:1000 dilution.

## Background

This gene encodes a member of the epidermal growth factor superfamily. The encoded preproprotein is proteolytically processed to generate the 53-amino acid epidermal growth factor peptide. This protein acts a potent mitogenic factor that plays an important role in the growth, proliferation and differentiation of numerous cell types. This protein acts by binding with high affinity to the cell surface receptor, epidermal growth factor receptor. Defects in this gene are the cause of hypomagnesemia type 4. Dysregulation of this gene has been associated with the growth and progression of certain cancers. Alternative splicing results in multiple transcript variants, at least one of which encodes a preproprotein that is proteolytically processed.

---

Note: This product is for in vitro research use only and is not intended for use in humans or animals.