

EMD Rabbit Polyclonal Antibody

Catalog No: #53743



Package Size: #53743-1 50ul #53743-2 100ul

Orders: order@signalwayantibody.com

Support: tech@signalwayantibody.com

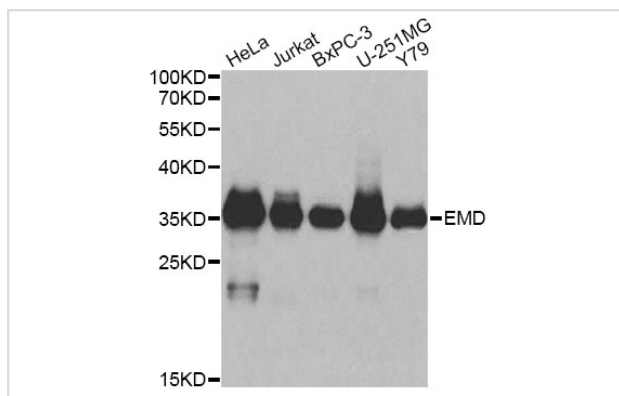
Description

Product Name	EMD Rabbit Polyclonal Antibody
Host Species	Rabbit
Clonality	Polyclonal
Isotype	IgG
Purification	Affinity purification
Applications	WB,IHC,IF
Species Reactivity	Human,Mouse
Immunogen Description	Recombinant fusion protein of human EMD (NP_000108.1).
Other Names	EMD;EDMD;LEMD5;STA;emerin
Accession No.	Swiss Prot:P50402GeneID:2010
Calculated MW	28kDa
SDS-PAGE MW	35kDa
Formulation	Buffer: PBS with 0.02% sodium azide,50% glycerol,pH7.3.
Storage	Store at -20°C. Avoid freeze / thaw cycles.

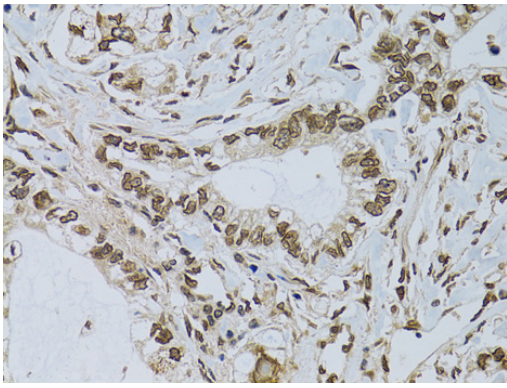
Application Details

WB □ 1:500 - 1:2000 IHC □ 1:50 - 1:200 IF □ 1:50 - 1:200

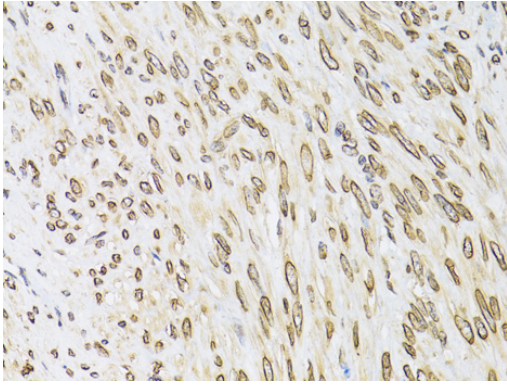
Images



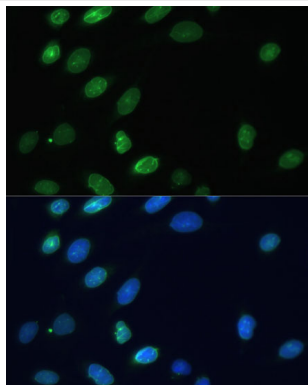
Western blot analysis of extracts of various cell lines, using EMD at 1:1000 dilution.



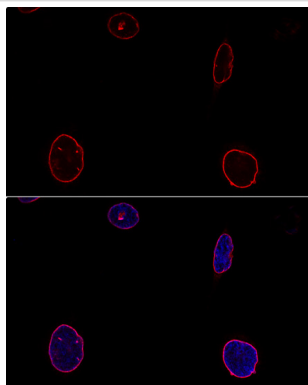
Immunohistochemistry of paraffin-embedded human gastric cancer using EMD at dilution of 1:100 (40x lens).



Immunohistochemistry of paraffin-embedded human uterine cancer using EMD at dilution of 1:100 (40x lens).



Immunofluorescence analysis of U-2 OS cells using EMD at dilution of 1:100. Blue: DAPI for nuclear staining.



Confocal immunofluorescence analysis of U-2OS cells using EMD at dilution of 1:100. Blue: DAPI for nuclear staining.

Background

Emerin is a serine-rich nuclear membrane protein and a member of the nuclear lamina-associated protein family. It mediates membrane anchorage to the cytoskeleton. Drefuss-Emery muscular dystrophy is an X-linked inherited degenerative myopathy resulting from mutation in the emerin gene.

Note: This product is for in vitro research use only and is not intended for use in humans or animals.