

# MCAM Rabbit Polyclonal Antibody

Catalog No: #53745



Package Size: #53745-1 50ul #53745-2 100ul

Orders: [order@signalwayantibody.com](mailto:order@signalwayantibody.com)

Support: [tech@signalwayantibody.com](mailto:tech@signalwayantibody.com)

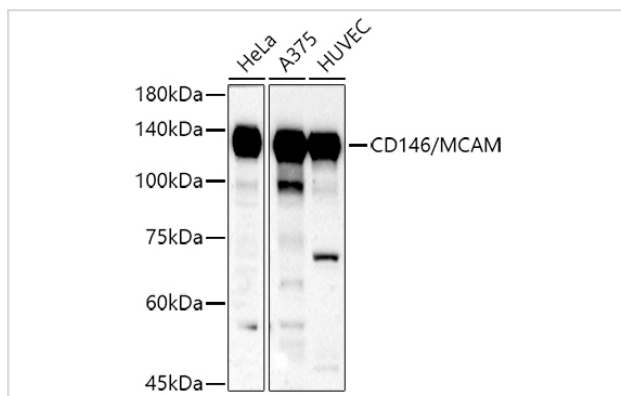
## Description

Product Name	MCAM Rabbit Polyclonal Antibody
Host Species	Rabbit
Clonality	Polyclonal
Isotype	IgG
Purification	Affinity purification
Applications	WB,IHC,IF
Species Reactivity	Human,Mouse,Rat
Immunogen Description	Recombinant fusion protein of human CD146/CD146/MCAM (NP_006491.2).
Other Names	MCAM;CD146;MUC18
Accession No.	Uniprot:P43121GeneID:4162
Calculated MW	57kDa/71kDa
SDS-PAGE MW	120KDa
Formulation	PBS with 0.02% sodium azide,50% glycerol,pH7.3.
Storage	Store at -20°C. Avoid freeze / thaw cycles.

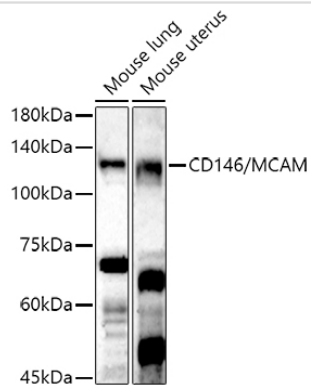
## Application Details

WB □ 1:500 - 1:2000 IHC □ 1:50 - 1:200 IF □ 1:50 - 1:200

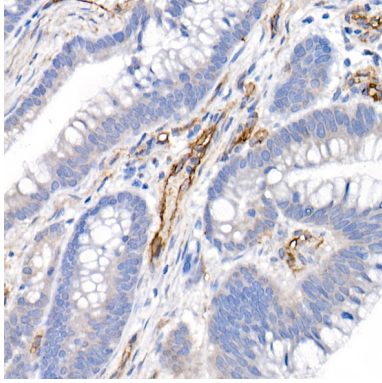
## Images



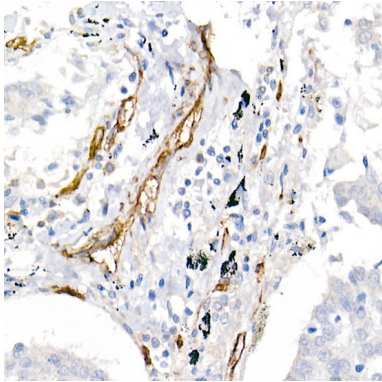
Western blot analysis of extracts of various cell lines, using CD146/MCAM antibody.



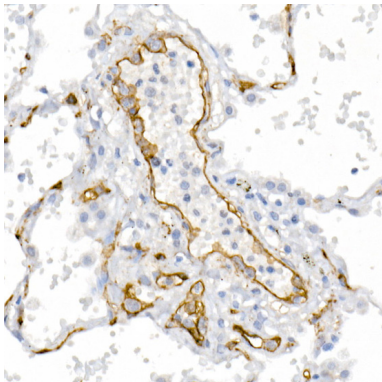
Western blot analysis of extracts of various cell lines, using CD146/MCAM antibody.



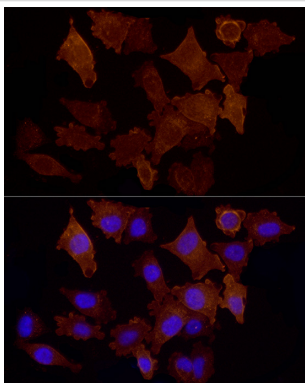
Immunohistochemistry of paraffin-embedded human colon carcinoma using CD146/MCAM Rabbit pAb.



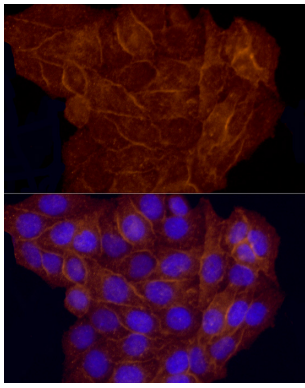
Immunohistochemistry of paraffin-embedded human lung cancer using CD146/MCAM Rabbit pAb.



Immunohistochemistry of paraffin-embedded human lung using CD146/MCAM Rabbit pAb.



Immunofluorescence analysis of A375 cells using CD146/MCAM Rabbit pAb.



Immunofluorescence analysis of HeLa cells using CD146/MCAM Rabbit pAb.

## Background

Plays a role in cell adhesion, and in cohesion of the endothelial monolayer at intercellular junctions in vascular tissue. Its expression may allow melanoma cells to interact with cellular elements of the vascular system, thereby enhancing hematogeneous tumor spread. Could be an adhesion molecule active in neural crest cells during embryonic development. Acts as surface receptor that triggers tyrosine phosphorylation of FYN and PTK2/FAK1, and a transient increase in the intracellular calcium concentration.

Note: This product is for in vitro research use only and is not intended for use in humans or animals.