

# CD34 Rabbit Polyclonal Antibody

Catalog No: #53746

Package Size: #53746-1 50ul #53746-2 100ul

Orders: [order@signalwayantibody.com](mailto:order@signalwayantibody.com)Support: [tech@signalwayantibody.com](mailto:tech@signalwayantibody.com)

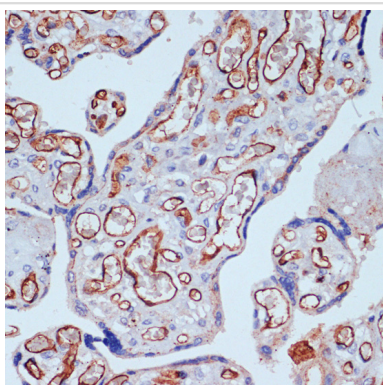
## Description

Product Name	CD34 Rabbit Polyclonal Antibody
Host Species	Rabbit
Clonality	Polyclonal
Isotype	IgG
Purification	Affinity purification
Applications	WB,IHC,IF
Species Reactivity	Human,Mouse,Rat
Immunogen Description	A synthetic peptide of human CD34 (NP_001020280.1).
Other Names	CD34;CD34 molecule;GIG3;MORT1
Accession No.	Swiss Prot:P28906GenelD:947
Calculated MW	35kDa/40kDa
SDS-PAGE MW	110kDa
Formulation	Buffer: PBS with 0.02% sodium azide,50% glycerol,pH7.3.
Storage	Store at -20°C. Avoid freeze / thaw cycles.

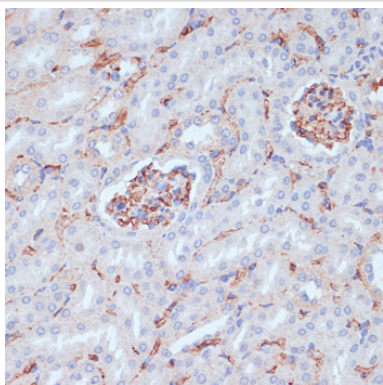
## Application Details

WB□1:500 - 1:2000IHC□1:50 - 1:200IF□1:50 - 1:200

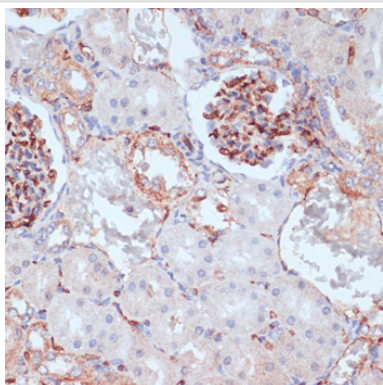
## Images



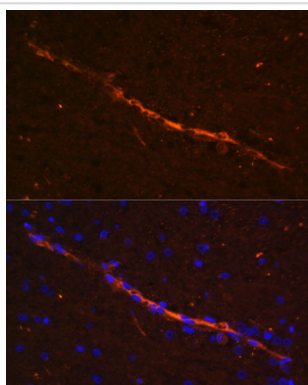
Immunohistochemistry of paraffin-embedded human placenta using CD34 at dilution of 1:100 (40x lens).



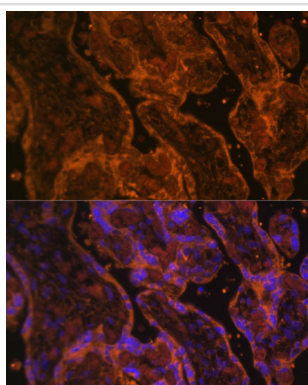
Immunohistochemistry of paraffin-embedded mouse kidney using CD34 at dilution of 1:100 (40x lens).



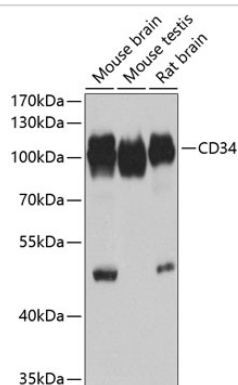
Immunohistochemistry of paraffin-embedded rat kidney using CD34 at dilution of 1:100 (40x lens).



Immunofluorescence analysis of rat brain using CD34 at dilution of 1:100. Blue: DAPI for nuclear staining.



Immunofluorescence analysis of human placenta using CD34 at dilution of 1:100. Blue: DAPI for nuclear staining.



Western blot analysis of extracts of various cell lines, using CD34 at 1:1000 dilution.

## Background

The protein encoded by this gene may play a role in the attachment of stem cells to the bone marrow extracellular matrix or to stromal cells. This single-pass membrane protein is highly glycosylated and phosphorylated by protein kinase C. Two transcript variants encoding different isoforms have been found for this gene.

## Published Papers

el at., Interleukin-17 and vascular endothelial growth factor: new biomarkers for the diagnosis of papillary thyroid carcinoma in patients with Hashimoto's thyroiditis. In J Int Med Res on 2022 Jan by Shuiping Li, Shilin Li,et al..PMID: 35023376, , (2022)

[PMID:35023376](#)

Note: This product is for in vitro research use only and is not intended for use in humans or animals.