

DBH Rabbit Polyclonal Antibody

Catalog No: #53763

Package Size: #53763-1 50ul #53763-2 100ul

Orders: order@signalwayantibody.comSupport: tech@signalwayantibody.com

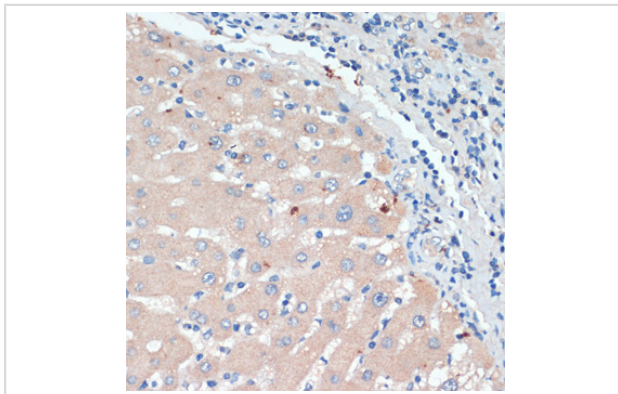
Description

Product Name	DBH Rabbit Polyclonal Antibody
Host Species	Rabbit
Clonality	Polyclonal
Isotype	IgG
Purification	Affinity purification
Applications	WB,IHC
Species Reactivity	Human,Mouse,Rat
Immunogen Description	Recombinant fusion protein of human DBH (NP_000778.3).
Other Names	DBH;DBM
Accession No.	Swiss Prot:P09172GeneID:1621
Calculated MW	69kDa
Formulation	Buffer: PBS with 0.02% sodium azide,50% glycerol,pH7.3.
Storage	Store at -20°C. Avoid freeze / thaw cycles.

Application Details

WB □ 1:2000 - 1:5000 IHC □ 1:50 - 1:200

Images



Immunohistochemistry of paraffin-embedded human liver using DBH at dilution of 1:200 (40x lens).

Background

The protein encoded by this gene is an oxidoreductase belonging to the copper type II, ascorbate-dependent monooxygenase family. It is present in the synaptic vesicles of postganglionic sympathetic neurons and converts dopamine to norepinephrine. It exists in both soluble and membrane-bound forms, depending on the absence or presence, respectively, of a signal peptide.

Note: This product is for in vitro research use only and is not intended for use in humans or animals.