

# EIF2AK1 Rabbit Polyclonal Antibody

Catalog No: #53802

Package Size: #53802-1 50ul #53802-2 100ul

Orders: [order@signalwayantibody.com](mailto:order@signalwayantibody.com)Support: [tech@signalwayantibody.com](mailto:tech@signalwayantibody.com)

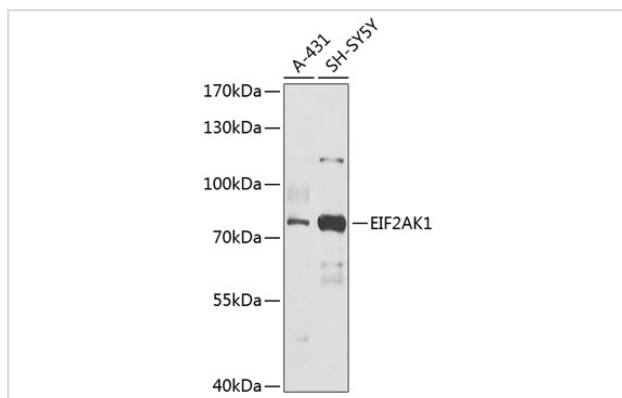
## Description

Product Name	EIF2AK1 Rabbit Polyclonal Antibody
Host Species	Rabbit
Clonality	Polyclonal
Isotype	IgG
Purification	Affinity purification
Applications	WB,IHC
Species Reactivity	Human,Rat
Immunogen Description	Recombinant fusion protein of human EIF2AK1 (NP_055228.2).
Other Names	EIF2AK1;HCR;HRI
Accession No.	Swiss Prot:Q9BQI3GeneID:27102
Calculated MW	71kDa
SDS-PAGE MW	71kDa
Formulation	Buffer: PBS with 0.02% sodium azide,50% glycerol,pH7.3.
Storage	Store at -20°C. Avoid freeze / thaw cycles.

## Application Details

WB □ 1:2000 - 1:5000 IHC □ 1:50 - 1:200

## Images



Western blot analysis of extracts of various cell lines, using EIF2AK1 at 1:1000 dilution.

## Background

The protein encoded by this gene acts at the level of translation initiation to downregulate protein synthesis in response to stress. The encoded protein is a kinase that can be inactivated by hemin. Two transcript variants encoding different isoforms have been found for this gene.

---

Note: This product is for in vitro research use only and is not intended for use in humans or animals.