

## NRF1 Rabbit Polyclonal Antibody

Catalog No: #53813



Package Size: #53813-1 50ul #53813-2 100ul

Orders: [order@signalwayantibody.com](mailto:order@signalwayantibody.com)Support: [tech@signalwayantibody.com](mailto:tech@signalwayantibody.com)

## Description

Product Name	NRF1 Rabbit Polyclonal Antibody
Host Species	Rabbit
Clonality	Polyclonal
Isotype	IgG
Purification	Affinity purification
Applications	WB,IHC,IF
Species Reactivity	Human,Mouse,Rat
Immunogen Description	Recombinant fusion protein of human NRF1 (NP_001035199.1).
Other Names	NRF1;ALPHA-PAL
Accession No.	Swiss Prot:Q16656GeneID:4899
Calculated MW	55-68kDa
Formulation	Buffer: PBS with 0.02% sodium azide,50% glycerol,pH7.3.
Storage	Store at -20°C. Avoid freeze / thaw cycles.

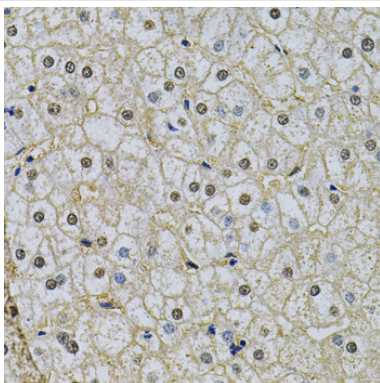
## Application Details

WB □ 1:500 - 1:2000

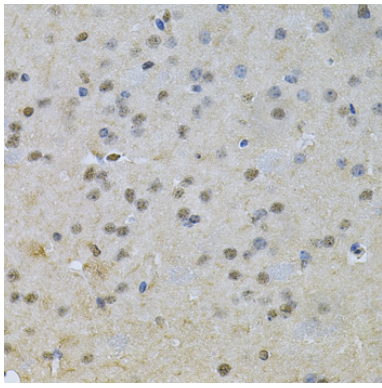
IHC □ 1:50 - 1:200

IF □ 1:50 - 1:200

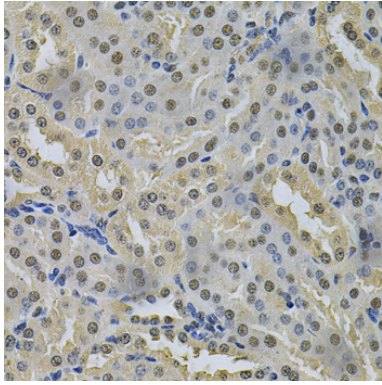
## Images



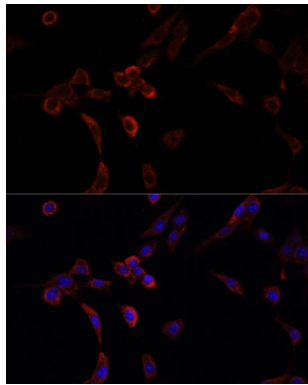
Immunohistochemistry of paraffin-embedded human liver damage using NRF1 at dilution of 1:100 (40x lens).



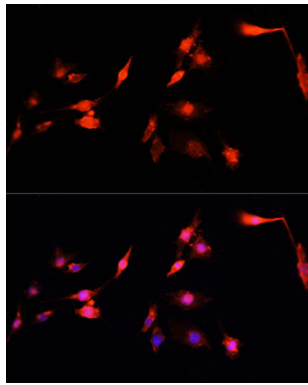
Immunohistochemistry of paraffin-embedded mouse brain using NRF1 at dilution of 1:100 (40x lens).



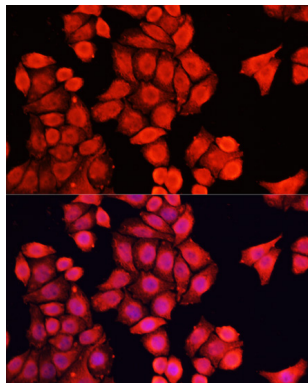
Immunohistochemistry of paraffin-embedded mouse kidney using NRF1 at dilution of 1:100 (40x lens).



Immunofluorescence analysis of NIH/3T3 cells using NRF1 at dilution of 1:100. Blue: DAPI for nuclear staining.



Immunofluorescence analysis of PC12 cells using NRF1 at dilution of 1:100. Blue: DAPI for nuclear staining.



Immunofluorescence analysis of HeLa cells using NRF1 at dilution of 1:100. Blue: DAPI for nuclear staining.

## Background

---

This gene encodes a protein that homodimerizes and functions as a transcription factor which activates the expression of some key metabolic genes regulating cellular growth and nuclear genes required for respiration, heme biosynthesis, and mitochondrial DNA transcription and replication. The protein has also been associated with the regulation of neurite outgrowth. Alternative splicing results in multiple transcript variants. Confusion has occurred in bibliographic databases due to the shared symbol of NRF1 for this gene and for 'nuclear factor (erythroid-derived 2)-like 1' which has an official symbol of NFE2L1.

---

Note: This product is for in vitro research use only and is not intended for use in humans or animals.