

EPHA5 Rabbit Polyclonal Antibody

Catalog No: #53830

Package Size: #53830-1 50ul #53830-2 100ul

Orders: order@signalwayantibody.com

Support: tech@signalwayantibody.com

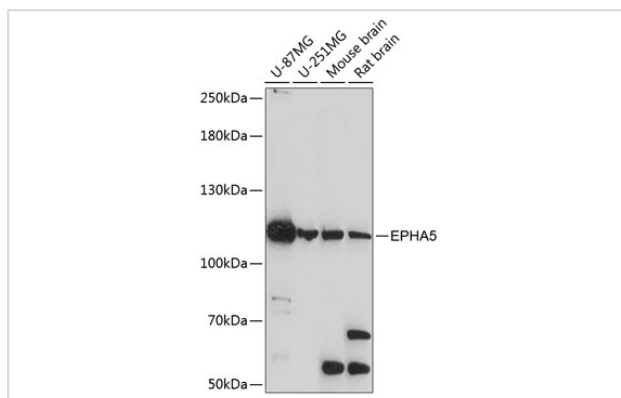
Description

Product Name	EPHA5 Rabbit Polyclonal Antibody
Host Species	Rabbit
Clonality	Polyclonal
Isotype	IgG
Purification	Affinity purification
Applications	WB,IF
Species Reactivity	Human,Mouse,Rat
Immunogen Description	Recombinant fusion protein of human EPHA5 (NP_004430.4).
Other Names	EPHA5;CEK7;EHK-1;EHK1;EK7;HEK7;TYRO4
Accession No.	Swiss Prot:P54756GeneID:2044
Calculated MW	107kDa/112kDa/114kDa
SDS-PAGE MW	115kDa
Formulation	Buffer: PBS with 0.02% sodium azide,50% glycerol,pH7.3.
Storage	Store at -20°C. Avoid freeze / thaw cycles.

Application Details

WB □ 1:500 - 1:2000 IF □ 1:50 - 1:200

Images



Western blot analysis of extracts of various cell lines, using EPHA5 at 1:1000 dilution.

Background

This gene belongs to the ephrin receptor subfamily of the protein-tyrosine kinase family. EPH and EPH-related receptors have been implicated in mediating developmental events, particularly in the nervous system. Receptors in the EPH subfamily typically have a single kinase domain and an extracellular region containing a Cys-rich domain and 2 fibronectin type III repeats. The ephrin receptors are divided into 2 groups based on the similarity of their extracellular domain sequences and their affinities for binding ephrin-A and ephrin-B ligands. Alternatively spliced transcript variants encoding different isoforms have been described.

Note: This product is for in vitro research use only and is not intended for use in humans or animals.