

JAG2 Rabbit Polyclonal Antibody

Catalog No: #53833



Package Size: #53833-1 50ul #53833-2 100ul

Orders: order@signalwayantibody.com

Support: tech@signalwayantibody.com

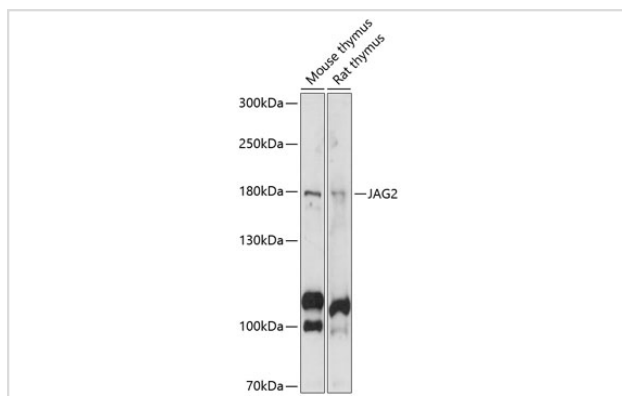
Description

Product Name	JAG2 Rabbit Polyclonal Antibody
Host Species	Rabbit
Clonality	Polyclonal
Isotype	IgG
Purification	Affinity purification
Applications	WB,IF
Species Reactivity	Human,Mouse,Rat
Immunogen Description	Recombinant fusion protein of human JAG2 (NP_002217.3).
Other Names	JAG2;HJ2;SER2;jagged 2
Accession No.	Swiss Prot:Q9Y219GeneID:3714
Calculated MW	129kDa/133kDa
SDS-PAGE MW	175kDa
Formulation	Buffer: PBS with 0.02% sodium azide,50% glycerol,pH7.3.
Storage	Store at -20°C. Avoid freeze / thaw cycles.

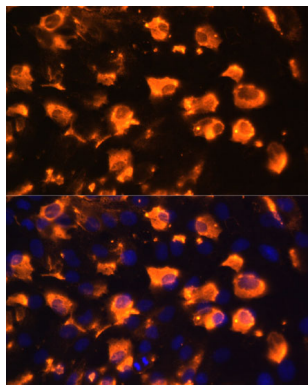
Application Details

WB □ 1:500 - 1:2000 IF □ 1:50 - 1:200

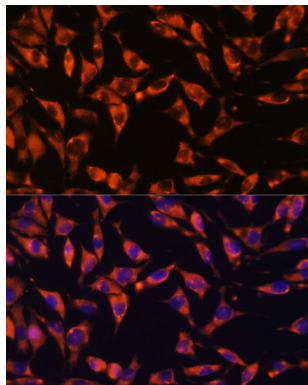
Images



Western blot analysis of extracts of various cell lines, using JAG2 at 1:1000 dilution.



Immunofluorescence analysis of C6 cells using JAG2 at dilution of 1:100. Blue: DAPI for nuclear staining.



Immunofluorescence analysis of L929 cells using JAG2 at dilution of 1:100. Blue: DAPI for nuclear staining.

Background

The Notch signaling pathway is an intercellular signaling mechanism that is essential for proper embryonic development. Members of the Notch gene family encode transmembrane receptors that are critical for various cell fate decisions. The protein encoded by this gene is one of several ligands that activate Notch and related receptors. Two transcript variants encoding different isoforms have been found for this gene.

Note: This product is for in vitro research use only and is not intended for use in humans or animals.