

## NDUFA4L2 Rabbit Polyclonal Antibody

Catalog No: #53841



Package Size: #53841-1 50ul #53841-2 100ul

Orders: [order@signalwayantibody.com](mailto:order@signalwayantibody.com)Support: [tech@signalwayantibody.com](mailto:tech@signalwayantibody.com)

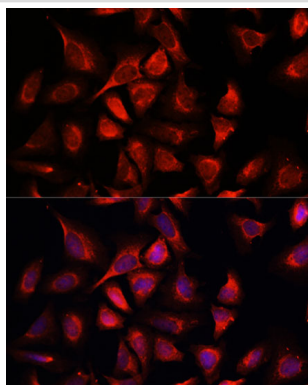
## Description

Product Name	NDUFA4L2 Rabbit Polyclonal Antibody
Host Species	Rabbit
Clonality	Polyclonal
Isotype	IgG
Purification	Affinity purification
Applications	WB,IHC,IF
Species Reactivity	Human,Mouse,Rat
Immunogen Description	Recombinant fusion protein of human NDUFA4L2 (NP_064527.1).
Other Names	NDUFA4L2;NUOMS;NDUFA4
Accession No.	Swiss Prot:Q9NRX3GeneID:56901
Calculated MW	9kDa
SDS-PAGE MW	12kDa
Formulation	Buffer: PBS with 0.02% sodium azide,50% glycerol,pH7.3.
Storage	Store at -20°C. Avoid freeze / thaw cycles.

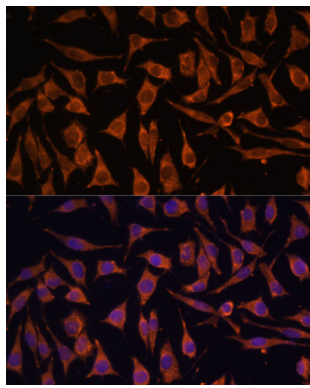
## Application Details

WB □ 1:500 - 1:2000 IHC □ 1:50 - 1:200 IF □ 1:50 - 1:200

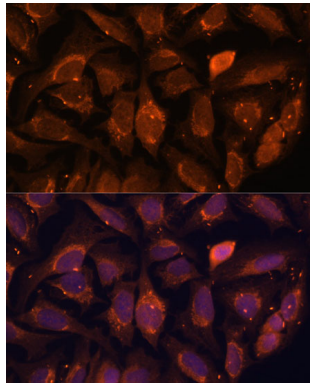
## Images



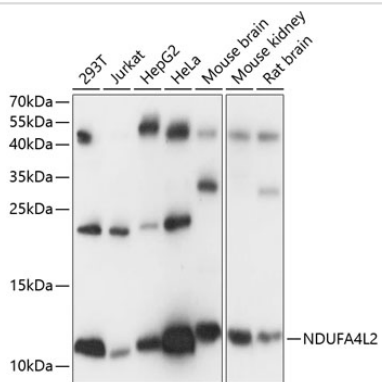
Immunofluorescence analysis of C6 cells using NDUFA4L2 at dilution of 1:100. Blue: DAPI for nuclear staining.



Immunofluorescence analysis of L929 cells using NDUFA4L2 at dilution of 1:100. Blue: DAPI for nuclear staining.



Immunofluorescence analysis of U-2 OS cells using NDUFA4L2 at dilution of 1:100. Blue: DAPI for nuclear staining.



Western blot analysis of extracts of various cell lines, using NDUFA4L2 at 1:1000 dilution.

## Background

Note: This product is for in vitro research use only and is not intended for use in humans or animals.