

IL6 Rabbit Polyclonal Antibody

Catalog No: #53904



Package Size: #53904-1 50ul #53904-2 100ul

Orders: order@signalwayantibody.com

Support: tech@signalwayantibody.com

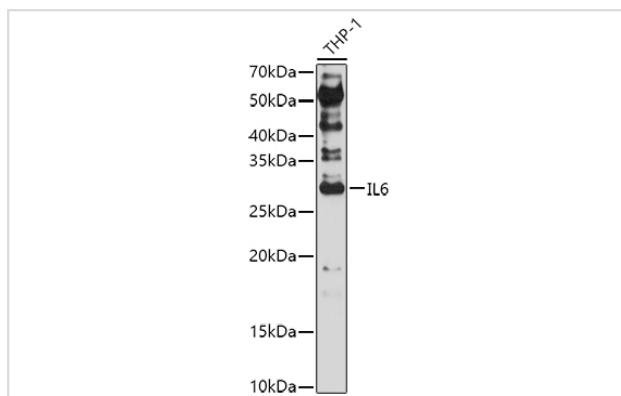
Description

Product Name	IL6 Rabbit Polyclonal Antibody
Host Species	Rabbit
Clonality	Polyclonal
Isotype	IgG
Purification	Affinity purification
Applications	WB
Species Reactivity	Human,Mouse,Rat
Immunogen Description	Recombinant fusion protein of human IL6 (NP_000591.1).
Other Names	IL6;BSF-2;BSF2;CDF;HGF;HSF;IFN-beta-2;IFNB2;IL-6
Accession No.	Uniprot:P05231GeneID:3569
Calculated MW	23kDa
SDS-PAGE MW	26KDa
Formulation	PBS with 0.02% sodium azide,50% glycerol,pH7.3.
Storage	Store at -20°C. Avoid freeze / thaw cycles.

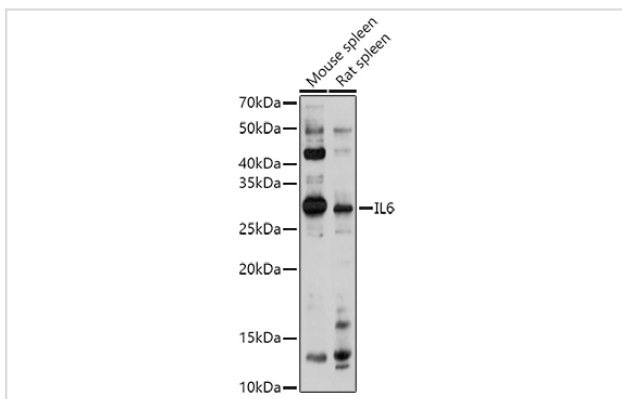
Application Details

WB □ 1:200 - 1:2000

Images



Western blot analysis of extracts of THP-1 cells, using IL6 antibody.



Western blot analysis of extracts of various cell lines, using IL6 antibody.

Background

This gene encodes a cytokine that functions in inflammation and the maturation of B cells. In addition, the encoded protein has been shown to be an endogenous pyrogen capable of inducing fever in people with autoimmune diseases or infections. The protein is primarily produced at sites of acute and chronic inflammation, where it is secreted into the serum and induces a transcriptional inflammatory response through interleukin 6 receptor, alpha. The functioning of this gene is implicated in a wide variety of inflammation-associated disease states, including susceptibility to diabetes mellitus and systemic juvenile rheumatoid arthritis. Alternative splicing results in multiple transcript variants.

Published Papers

el at., Receptor tyrosine kinase C-kit promotes a destructive phenotype of FLS in osteoarthritis via intracellular EMT signaling *In Mol Med* On 2023 Mar 23 by Xu Cao, Song Wu et al. PMID: 36959556, (2023)

[PMID:36959556](#)

Note: This product is for in vitro research use only and is not intended for use in humans or animals.