

## DKK2 Rabbit Polyclonal Antibody

Catalog No: #53941

Package Size: #53941-1 50ul #53941-2 100ul

Orders: [order@signalwayantibody.com](mailto:order@signalwayantibody.com)Support: [tech@signalwayantibody.com](mailto:tech@signalwayantibody.com)

## Description

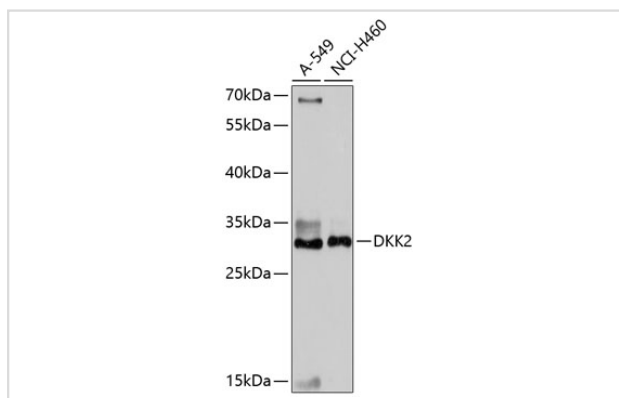
|                       |   |
|-----------------------|---|
| Product Name          | DKK2 Rabbit Polyclonal Antibody                         |
| Host Species          | Rabbit  |
| Clonality             | Polyclonal  |
| Isotype               | IgG   |
| Purification          | Affinity purification                                   |
| Applications          | WB,IF   |
| Species Reactivity    | Human   |
| Immunogen Description | A synthetic peptide of human DKK2 (NP_055236.1).        |
| Other Names           | DKK2;DKK-2  |
| Accession No.         | Swiss Prot:Q9UBU2GeneID:27123                           |
| Calculated MW         | 28kDa   |
| SDS-PAGE MW           | 30kDa   |
| Formulation           | Buffer: PBS with 0.02% sodium azide,50% glycerol,pH7.3. |
| Storage               | Store at -20°C. Avoid freeze / thaw cycles.             |

## Application Details

WB □ 1:500 - 1:2000

IF □ 1:50 - 1:200

## Images



Western blot analysis of extracts of various cell lines, using DKK2 at 1:1000 dilution.

## Background

This gene encodes a protein that is a member of the dickkopf family. The secreted protein contains two cysteine rich regions and is involved in embryonic development through its interactions with the Wnt signaling pathway. It can act as either an agonist or antagonist of Wnt/beta-catenin signaling, depending on the cellular context and the presence of the co-factor kremen 2. Activity of this protein is also modulated by binding to the Wnt co-receptor LDL-receptor related protein 6 (LRP6).

---

Note: This product is for in vitro research use only and is not intended for use in humans or animals.