

OXSR1 Rabbit Polyclonal Antibody

Catalog No: #53990



Package Size: #53990-1 50ul #53990-2 100ul

Orders: order@signalwayantibody.com

Support: tech@signalwayantibody.com

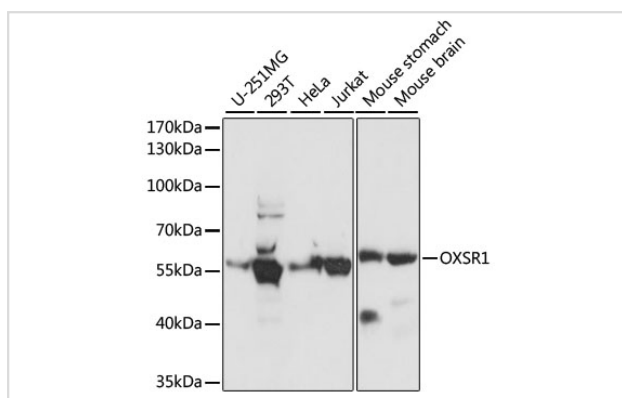
Description

Product Name	OXSR1 Rabbit Polyclonal Antibody
Host Species	Rabbit
Clonality	Polyclonal
Isotype	IgG
Purification	Affinity purification
Applications	WB,IF
Species Reactivity	Human,Mouse,Rat
Immunogen Description	A synthetic peptide of human OXSR1 (NP_005100.1).
Other Names	OXSR1;OSR1
Accession No.	Swiss Prot:O95747GeneID:9943
Calculated MW	58kDa
SDS-PAGE MW	58kDa
Formulation	Buffer: PBS with 0.02% sodium azide,50% glycerol,pH7.3.
Storage	Store at -20°C. Avoid freeze / thaw cycles.

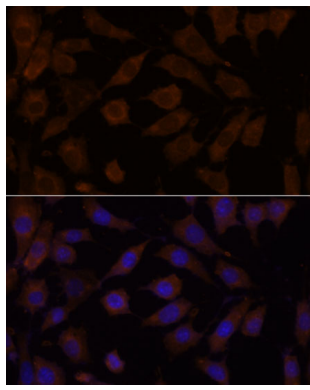
Application Details

WB □ 1:500 - 1:2000 IF □ 1:50 - 1:200

Images



Western blot analysis of extracts of various cell lines, using OXSR1 at 1:1000 dilution.



Immunofluorescence analysis of L929 cells using OXSR1 at dilution of 1:100. Blue: DAPI for nuclear staining.

Background

The product of this gene belongs to the Ser/Thr protein kinase family of proteins. It regulates downstream kinases in response to environmental stress, and may play a role in regulating the actin cytoskeleton.

Note: This product is for in vitro research use only and is not intended for use in humans or animals.