

TRAF6 Antibody

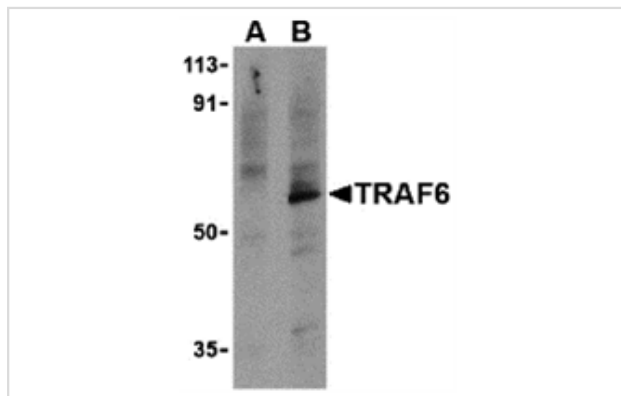
Catalog No: #24191

Orders: order@signalwayantibody.comSupport: tech@signalwayantibody.com

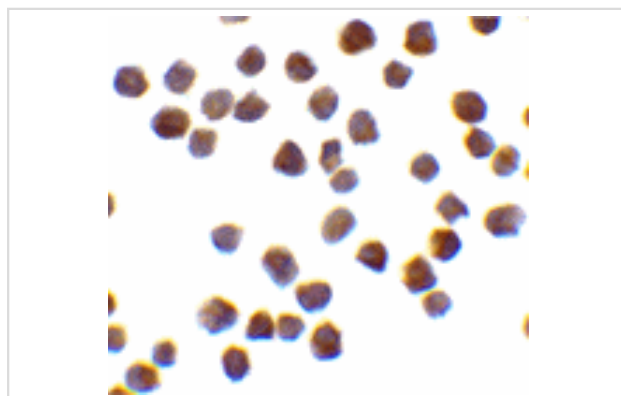
Description

Product Name	TRAF6 Antibody
Host Species	Rabbit
Clonality	Polyclonal
Purification	Ion exchange chromatography purified
Applications	ELISA WB ICC
Species Reactivity	Hu Ms Rt
Immunogen Type	Peptide
Immunogen Description	Raised against a peptide corresponding to 14 amino acids near the C-terminus of human TRAF6.
Target Name	TRAF6
Accession No.	NP_004611
Concentration	1mg/ml
Formulation	Supplied in PBS containing 0.02% sodium azide.
Storage	Can be stored at -20°C, stable for one year. As with all antibodies care should be taken to avoid repeated freeze thaw cycles. Antibodies should not be exposed to prolonged high temperatures.

Images



Western blot analysis of TRAF6 in PC-3 cell lysates with TRAF6 antibody at 1 ug/mL in the presence (A) or absence (B) of 1 ug blocking peptide.



Immunocytochemistry of TRAF6 in K562 cells with TRAF6 antibody at 0.5 ug/mL.

Background

Signals from the IL-1 receptor (IL-1R)/Toll-like receptor (TLR) and TNF receptor (TNFR) superfamilies are critical for regulating the function of antigen-presenting cells. Signals transduced by these molecules lead to increased expression and activation of transcription factors such as NF- κ B. TNF receptor-associated factor 6 (TRAF6) is unique in that it is a signaling adapter molecule common to both families. TRAF6 is important in cytokine production, dendritic cell (DC) maturation, and the T cell stimulatory capacity of DCs in response to TLR and CD40 ligands. It can be activated in the IL-1R/TLR signaling pathway by IL-1 receptor-associated kinase 1 (IRAK-1) or by other TLR adaptor molecules such as TRIF. Also, it has been shown that TRAF6 can interact directly with TNFR family members CD40 and RANK.

Note: This product is for in vitro research use only and is not intended for use in humans or animals.