

EEF1E1 Rabbit Polyclonal Antibody

Catalog No: #54023



Package Size: #54023-1 50ul #54023-2 100ul

Orders: order@signalwayantibody.comSupport: tech@signalwayantibody.com

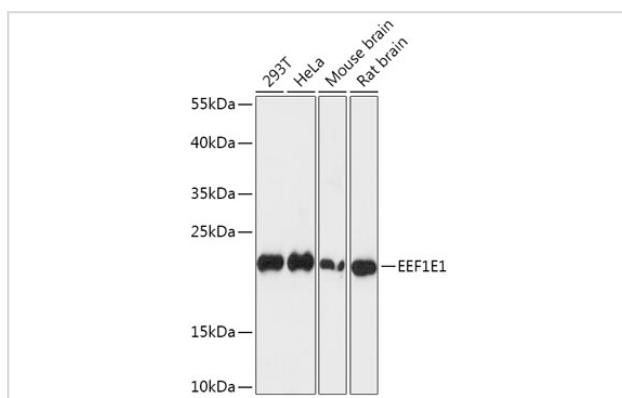
Description

Product Name	EEF1E1 Rabbit Polyclonal Antibody
Host Species	Rabbit
Clonality	Polyclonal
Isotype	IgG
Purification	Affinity purification
Applications	WB,IF
Species Reactivity	Human,Mouse,Rat
Immunogen Description	A synthetic peptide of human EEF1E1 (NP_004271.1).
Other Names	EEF1E1;AIMP3;P18
Accession No.	Swiss Prot:O43324GeneID:9521
Calculated MW	15kDa/19kDa
SDS-PAGE MW	20kDa
Formulation	Buffer: PBS with 0.02% sodium azide,50% glycerol,pH7.3.
Storage	Store at -20°C. Avoid freeze / thaw cycles.

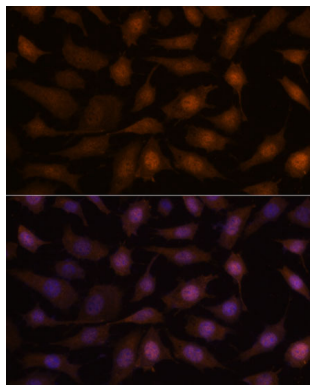
Application Details

WB □ 1:200 - 1:2000 IF □ 1:50 - 1:200

Images



Western blot analysis of extracts of various cell lines, using EEF1E1 at 1:1000 dilution.



Immunofluorescence analysis of L929 cells using EEF1E1 at dilution of 1:100. Blue: DAPI for nuclear staining.

Background

This gene encodes a multifunctional protein that localizes to both the cytoplasm and nucleus. In the cytoplasm, the encoded protein is an auxiliary component of the macromolecular aminoacyl-tRNA synthase complex. However, its mouse homolog has been shown to translocate to the nucleus in response to DNA damage, and it plays a positive role in ATM/ATR-mediated p53 activation. Alternative splicing results in multiple transcript variants. Read-through transcription also exists between this gene and the neighboring downstream MUTED (muted homolog) gene. An EEF1E1-related pseudogene has been identified on chromosome 2.

Note: This product is for in vitro research use only and is not intended for use in humans or animals.