

ESPL1 Rabbit Polyclonal Antibody

Catalog No: #54024



Package Size: #54024-1 50ul #54024-2 100ul

Orders: order@signalwayantibody.comSupport: tech@signalwayantibody.com

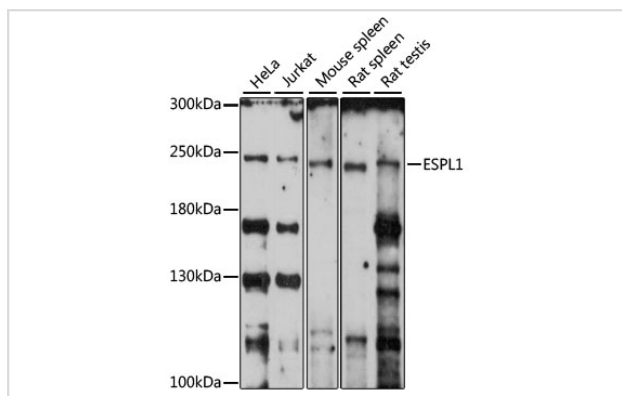
Description

Product Name	ESPL1 Rabbit Polyclonal Antibody
Host Species	Rabbit
Clonality	Polyclonal
Isotype	IgG
Purification	Affinity purification
Applications	WB,IF
Species Reactivity	Human,Mouse,Rat
Immunogen Description	Recombinant fusion protein of human ESPL1 (NP_036423.4).
Other Names	ESPL1;ESP1;SEPA;separin
Accession No.	Swiss Prot:Q14674GeneID:9700
Calculated MW	197kDa/233kDa
SDS-PAGE MW	233kDa
Formulation	Buffer: PBS with 0.02% sodium azide,50% glycerol,pH7.3.
Storage	Store at -20°C. Avoid freeze / thaw cycles.

Application Details

WB □ 1:200 - 1:2000 IF □ 1:50 - 1:200

Images



Western blot analysis of extracts of various cell lines, using ESPL1 at 1:1000 dilution.

Background

-

Note: This product is for in vitro research use only and is not intended for use in humans or animals.