

WDHD1 Rabbit Polyclonal Antibody

Catalog No: #54031



Package Size: #54031-1 50ul #54031-2 100ul

Orders: order@signalwayantibody.com

Support: tech@signalwayantibody.com

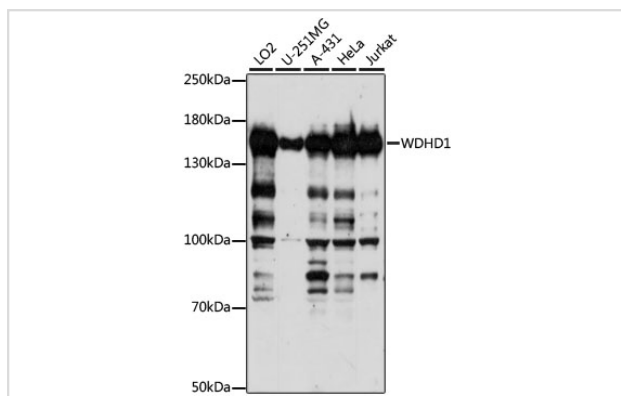
Description

Product Name	WDHD1 Rabbit Polyclonal Antibody
Host Species	Rabbit
Clonality	Polyclonal
Isotype	IgG
Purification	Affinity purification
Applications	WB,IHC,IF
Species Reactivity	Human,Rat
Immunogen Description	Recombinant fusion protein of human WDHD1 (NP_009017.1).
Other Names	WDHD1;AND-1;AND1;CHTF4;CTF4
Accession No.	Swiss Prot:O75717GeneID:11169
Calculated MW	112kDa/125kDa
SDS-PAGE MW	135kDa
Formulation	Buffer: PBS with 0.02% sodium azide,50% glycerol,pH7.3.
Storage	Store at -20°C. Avoid freeze / thaw cycles.

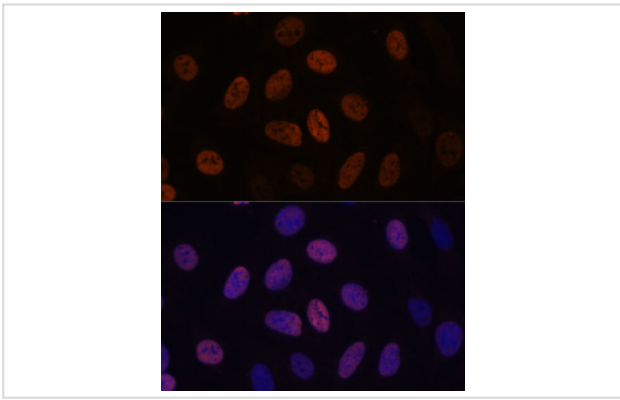
Application Details

WB □ 1:500 - 1:2000 IHC □ 1:50 - 1:200 IF □ 1:50 - 1:200

Images



Western blot analysis of extracts of various cell lines, using WDHD1 at 1:1000 dilution.



Immunofluorescence analysis of U-2 OS cells using WDHD1 at dilution of 1:100. Blue: DAPI for nuclear staining.

Background

The protein encoded by this gene contains multiple N-terminal WD40 domains and a C-terminal high mobility group (HMG) box. WD40 domains are found in a variety of eukaryotic proteins and may function as adaptor/regulatory modules in signal transduction, pre-mRNA processing and cytoskeleton assembly. HMG boxes are found in many eukaryotic proteins involved in chromatin assembly, transcription and replication. Alternative splicing results in two transcript variants encoding different isoforms.

Note: This product is for in vitro research use only and is not intended for use in humans or animals.