

WDR61 Rabbit Polyclonal Antibody

Catalog No: #54046



Package Size: #54046-1 50ul #54046-2 100ul

Orders: order@signalwayantibody.com

Support: tech@signalwayantibody.com

Description

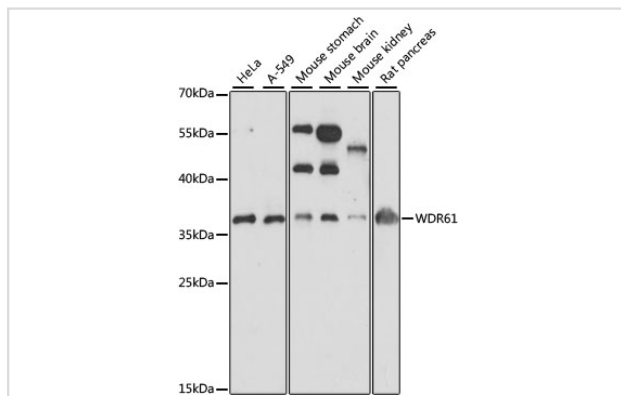
Product Name	WDR61 Rabbit Polyclonal Antibody
Host Species	Rabbit
Clonality	Polyclonal
Isotype	IgG
Purification	Affinity purification
Applications	WB,IHC
Species Reactivity	Human,Mouse,Rat
Immunogen Description	Recombinant fusion protein of human WDR61 (NP_079510.1).
Other Names	WDR61;REC14;SKI8
Accession No.	Swiss Prot:Q9GZS3GeneID:80349
Calculated MW	33kDa
SDS-PAGE MW	36kDa
Formulation	PBS with 0.01% thimerosal,50% glycerol,pH7.3.
Storage	Store at -20°C. Avoid freeze / thaw cycles.

Application Details

WB □ 1:2000 - 1:5000

IHC □ 1:50 - 1:200

Images



Western blot analysis of extracts of various cell lines, using WDR61 at 1:1000 dilution.

Background

Note: This product is for in vitro research use only and is not intended for use in humans or animals.