

VMP1 Rabbit Polyclonal Antibody

Catalog No: #54047

Package Size: #54047-1 50ul #54047-2 100ul

Orders: order@signalwayantibody.comSupport: tech@signalwayantibody.com

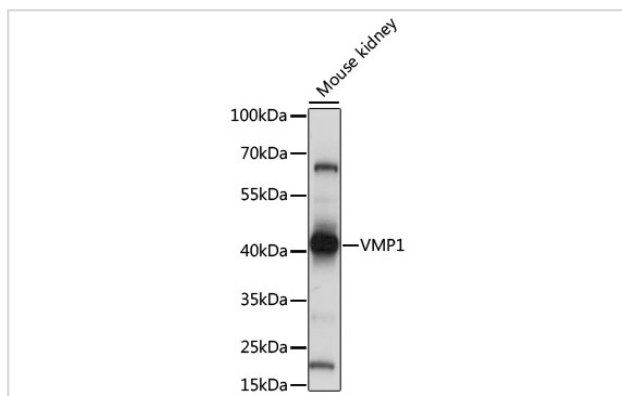
Description

Product Name	VMP1 Rabbit Polyclonal Antibody
Host Species	Rabbit
Clonality	Polyclonal
Isotype	IgG
Purification	Affinity purification
Applications	WB,IF
Species Reactivity	Human,Mouse,Rat
Immunogen Description	A synthetic peptide of human VMP1 (NP_112200.2).
Other Names	VMP1;EPG3;TANGO5;TMEM49
Accession No.	Swiss Prot:Q96GC9GeneID:81671
Calculated MW	24kDa/46kDa
SDS-PAGE MW	42kDa
Formulation	Buffer: PBS with 0.02% sodium azide,50% glycerol,pH7.3.
Storage	Store at -20°C. Avoid freeze / thaw cycles.

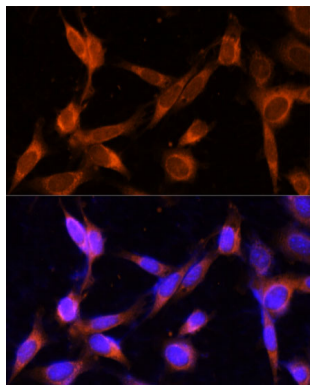
Application Details

WB □ 1:200 - 1:2000 IF □ 1:50 - 1:200

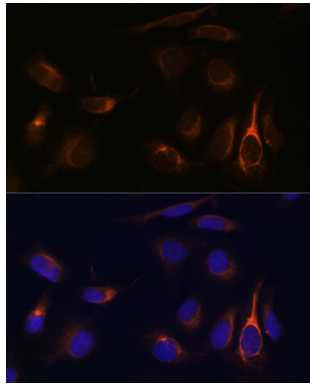
Images



Western blot analysis of extracts of mouse kidney, using VMP1 at 1:1000 dilution.



Immunofluorescence analysis of NIH-3T3 cells using VMP1 Polyclonal at dilution of 1:100 (40x lens). Blue: DAPI for nuclear staining.



Immunofluorescence analysis of U-2 OS cells using VMP1 Polyclonal at dilution of 1:100 (40x lens). Blue: DAPI for nuclear staining.

Background

-

Note: This product is for in vitro research use only and is not intended for use in humans or animals.