

## ETS1 Rabbit Polyclonal Antibody

Catalog No: #54068

Package Size: #54068-1 50ul #54068-2 100ul

Orders: order@signalwayantibody.com

Support: tech@signalwayantibody.com

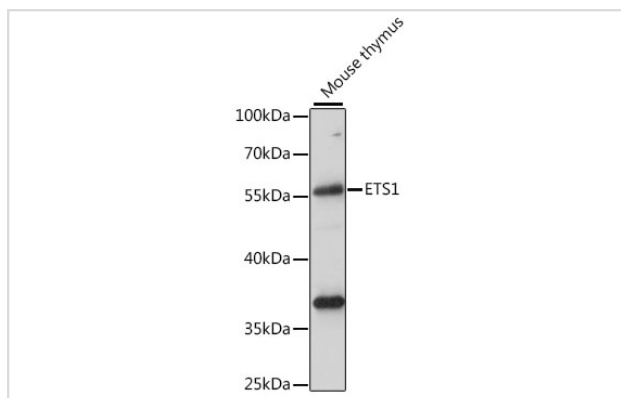
## Description

Product Name	ETS1 Rabbit Polyclonal Antibody
Host Species	Rabbit
Clonality	Polyclonal
Isotype	IgG
Purification	Affinity purification
Applications	WB,IHC,IF
Species Reactivity	Human,Mouse,Rat
Immunogen Description	Recombinant fusion protein of human ETS1 (NP_005229.1).
Other Names	ETS-1;EWSR2;c-ets-1;p54;ETS1
Accession No.	Swiss Prot:P14921GeneID:2113
Calculated MW	25kDa/30kDa/40kDa/50kDa/55kDa
SDS-PAGE MW	56kDa
Formulation	Buffer: PBS with 0.02% sodium azide,50% glycerol,pH7.3.
Storage	Store at -20°C. Avoid freeze / thaw cycles.

## Application Details

WB □ 1:500 - 1:2000 IHC □ 1:50 - 1:200 IF □ 1:50 - 1:200

## Images



Western blot analysis of extracts of mouse thymus, using ETS1 at 1:1000 dilution.

## Background

This gene encodes a member of the ETS family of transcription factors, which are defined by the presence of a conserved ETS DNA-binding domain that recognizes the core consensus DNA sequence GGAA/T in target genes. These proteins function either as transcriptional activators or repressors of numerous genes, and are involved in stem cell development, cell senescence and death, and tumorigenesis. Alternatively spliced transcript variants encoding different isoforms have been described for this gene.

---

Note: This product is for in vitro research use only and is not intended for use in humans or animals.