

EDIL3 Rabbit Polyclonal Antibody

Catalog No: #54091



Package Size: #54091-1 50ul #54091-2 100ul

Orders: order@signalwayantibody.comSupport: tech@signalwayantibody.com

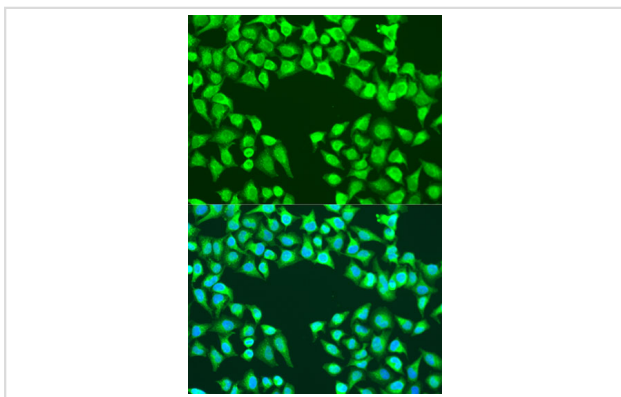
Description

Product Name	EDIL3 Rabbit Polyclonal Antibody
Host Species	Rabbit
Clonality	Polyclonal
Isotype	IgG
Purification	Affinity purification
Applications	WB,IF
Species Reactivity	Human,Mouse
Immunogen Description	A synthetic peptide of human EDIL3 (NP_005702.3).
Other Names	EDIL3;DEL1
Accession No.	Swiss Prot:O43854GeneID:10085
Calculated MW	52kDa/53kDa
Formulation	Buffer: PBS with 0.02% sodium azide,50% glycerol,pH7.3.
Storage	Store at -20°C. Avoid freeze / thaw cycles.

Application Details

WB □ 1:500 - 1:2000 IF □ 1:50 - 1:200

Images



Immunofluorescence analysis of U2OS cells using EDIL3 at dilution of 1:100. Blue: DAPI for nuclear staining.

Background

The protein encoded by this gene is an integrin ligand. It plays an important role in mediating angiogenesis and may be important in vessel wall remodeling and development. It also influences endothelial cell behavior.

Note: This product is for in vitro research use only and is not intended for use in humans or animals.