

## ELSPBP1 Rabbit Polyclonal Antibody

Catalog No: #54110



Package Size: #54110-1 50ul #54110-2 100ul

Orders: [order@signalwayantibody.com](mailto:order@signalwayantibody.com)Support: [tech@signalwayantibody.com](mailto:tech@signalwayantibody.com)

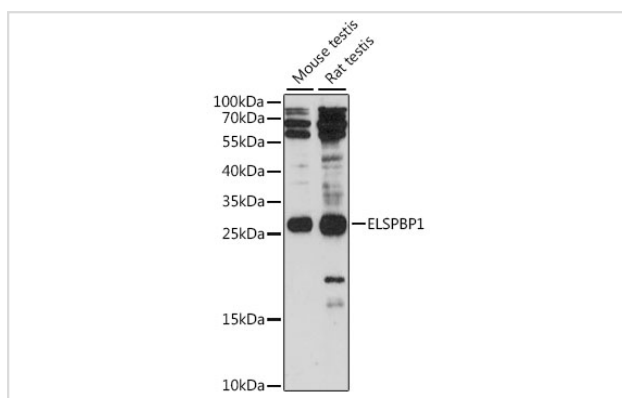
## Description

Product Name	ELSPBP1 Rabbit Polyclonal Antibody
Host Species	Rabbit
Clonality	Polyclonal
Isotype	IgG
Purification	Affinity purification
Applications	WB,IF
Species Reactivity	Mouse,Rat
Immunogen Description	Recombinant fusion protein of human ELSPBP1 (NP_071425.3).
Other Names	ELSPBP1;E12;EDDM12;EL149;HE12
Accession No.	Swiss Prot:Q96BH3GeneID:64100
Calculated MW	26kDa
SDS-PAGE MW	26kDa
Formulation	Buffer: PBS with 0.02% sodium azide,50% glycerol,pH7.3.
Storage	Store at -20°C. Avoid freeze / thaw cycles.

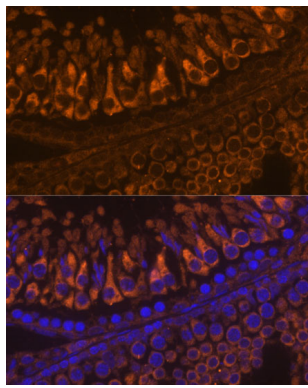
## Application Details

WB □ 1:500 - 1:2000 IF □ 1:50 - 1:200

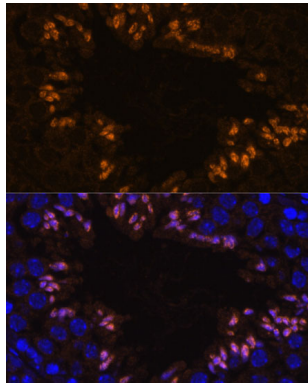
## Images



Western blot analysis of extracts of various cell lines, using ELSPBP1 at 1:1000 dilution.



Immunofluorescence analysis of rat testis using ELSPBP1 at dilution of 1:100. Blue: DAPI for nuclear staining.



Immunofluorescence analysis of mouse testis using ELSPBP1 at dilution of 1:100. Blue: DAPI for nuclear staining.

## Background

The protein encoded by this gene belongs to the sperm-coating protein family of epididymal origin. This protein and its canine homolog are the first known examples of proteins with four tandemly arranged fibronectin type 2 (Fn2) domains in the Fn2-module protein family.

Note: This product is for in vitro research use only and is not intended for use in humans or animals.