

## ESPN Rabbit Polyclonal Antibody

Catalog No: #54114

Package Size: #54114-1 50ul #54114-2 100ul

Orders: order@signalwayantibody.com

Support: tech@signalwayantibody.com

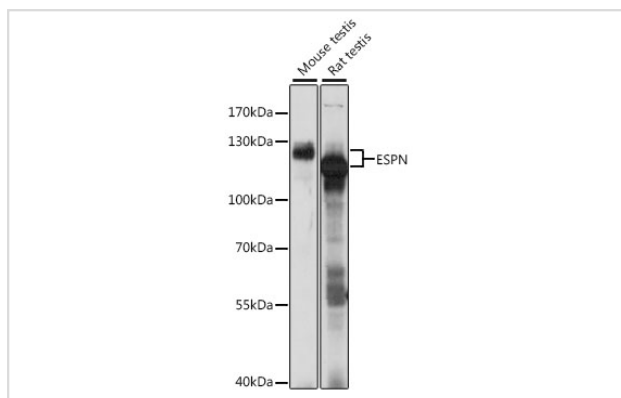
## Description

Product Name	ESPN Rabbit Polyclonal Antibody
Host Species	Rabbit
Clonality	Polyclonal
Isotype	IgG
Purification	Affinity purification
Applications	WB,IHC
Species Reactivity	Human,Mouse,Rat
Immunogen Description	Recombinant fusion protein of human ESPN (NP_113663.2).
Other Names	ESPN;DFNB36;LP2654;espin
Accession No.	Swiss Prot:B1AK53GeneID:83715
Calculated MW	31kDa/91kDa
SDS-PAGE MW	110-120kDa
Formulation	Buffer: PBS with 0.02% sodium azide,50% glycerol,pH7.3.
Storage	Store at -20°C. Avoid freeze / thaw cycles.

## Application Details

WB □ 1:2000 - 1:5000 IHC □ 1:50 - 1:200

## Images



Western blot analysis of extracts of various cell lines, using ESPN at 1:1000 dilution.

## Background

This gene encodes a multifunctional actin-bundling protein. It plays a major role in regulating the organization, dimensions, dynamics, and signaling capacities of the actin filament-rich, microvillus-type specializations that mediate sensory transduction in various mechanosensory and chemosensory cells. Mutations in this gene are associated with autosomal recessive neurosensory deafness, and autosomal dominant sensorineural deafness without vestibular involvement.

---

Note: This product is for in vitro research use only and is not intended for use in humans or animals.