

# ETFB Rabbit Polyclonal Antibody

Catalog No: #54131



Package Size: #54131-1 50ul #54131-2 100ul

Orders: [order@signalwayantibody.com](mailto:order@signalwayantibody.com)

Support: [tech@signalwayantibody.com](mailto:tech@signalwayantibody.com)

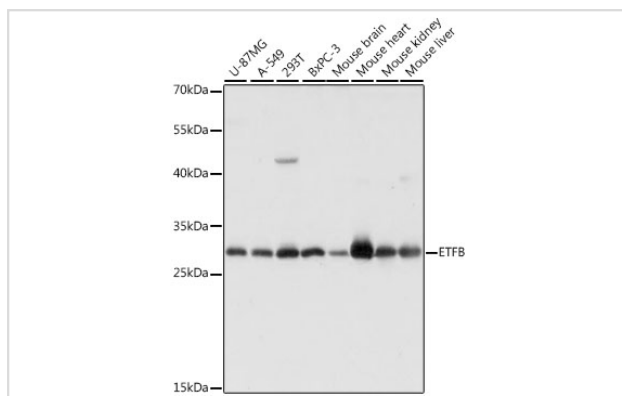
## Description

Product Name	ETFB Rabbit Polyclonal Antibody
Host Species	Rabbit
Clonality	Polyclonal
Isotype	IgG
Purification	Affinity purification
Applications	WB,IF
Species Reactivity	Human,Mouse,Rat
Immunogen Description	Recombinant fusion protein of human ETFB (NP_001976.1).
Other Names	ETFB;FP585;MADD
Accession No.	Swiss Prot:P38117GeneID:2109
Calculated MW	27kDa/37kDa
SDS-PAGE MW	30kDa
Formulation	Buffer: PBS with 0.02% sodium azide,50% glycerol,pH7.3.
Storage	Store at -20°C. Avoid freeze / thaw cycles.

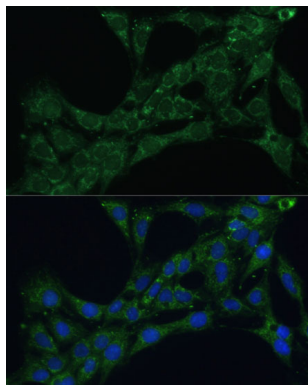
## Application Details

WB 1:500 - 1:2000 IF 1:50 - 1:100

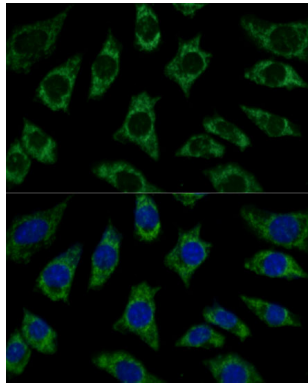
## Images



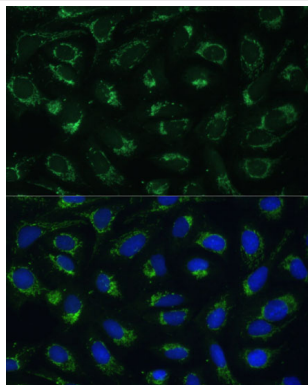
Western blot analysis of extracts of various cell lines, using ETFB at 1:1000 dilution.



Immunofluorescence analysis of C6 cells using ETFB Polyclonal at dilution of 1:100 (40x lens). Blue: DAPI for nuclear staining.



Immunofluorescence analysis of L929 cells using ETFB Polyclonal at dilution of 1:100 (40x lens). Blue: DAPI for nuclear staining.



Immunofluorescence analysis of U-2 OS cells using ETFB Polyclonal at dilution of 1:100 (40x lens). Blue: DAPI for nuclear staining.

## Background

This gene encodes electron-transfer-flavoprotein, beta polypeptide, which shuttles electrons between primary flavoprotein dehydrogenases involved in mitochondrial fatty acid and amino acid catabolism and the membrane-bound electron transfer flavoprotein ubiquinone oxidoreductase. The gene deficiencies have been implicated in type II glutaricaciduria. Alternatively spliced transcript variants have been found for this gene.

Note: This product is for in vitro research use only and is not intended for use in humans or animals.