

## EPN2 Rabbit Polyclonal Antibody

Catalog No: #54141

Package Size: #54141-1 50ul #54141-2 100ul

Orders: [order@signalwayantibody.com](mailto:order@signalwayantibody.com)Support: [tech@signalwayantibody.com](mailto:tech@signalwayantibody.com)

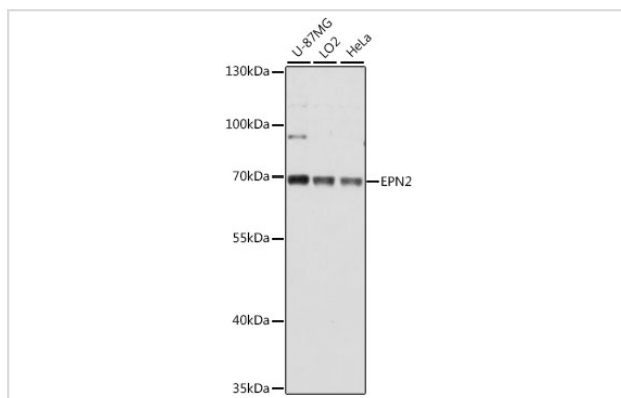
## Description

Product Name	EPN2 Rabbit Polyclonal Antibody
Host Species	Rabbit
Clonality	Polyclonal
Isotype	IgG
Purification	Affinity purification
Applications	WB,IHC
Species Reactivity	Human
Immunogen Description	Recombinant fusion protein of human EPN2 (NP_683723.2).
Other Names	EPN2;EHB21;epsin-2
Accession No.	Swiss Prot:O95208GeneID:22905
Calculated MW	36kDa/57kDa/62kDa/68kDa
SDS-PAGE MW	70kDa
Formulation	Buffer: PBS with 0.02% sodium azide,50% glycerol,pH7.3.
Storage	Store at -20°C. Avoid freeze / thaw cycles.

## Application Details

WB □ 1:2000 - 1:5000 IHC □ 1:50 - 1:200

## Images



Western blot analysis of extracts of various cell lines, using EPN2 at 1:1000 dilution.

## Background

This gene encodes a protein which interacts with clathrin and adaptor-related protein complex 2, alpha 1 subunit. The protein is found in a brain-derived clathrin-coated vesicle fraction and localizes to the peri-Golgi region and the cell periphery. The protein is thought to be involved in clathrin-mediated endocytosis. Alternate splicing of this gene results in multiple transcript variants encoding different isoforms.

---

Note: This product is for in vitro research use only and is not intended for use in humans or animals.