

EML4 Rabbit Polyclonal Antibody

Catalog No: #54143



Package Size: #54143-1 50ul #54143-2 100ul

Orders: order@signalwayantibody.comSupport: tech@signalwayantibody.com

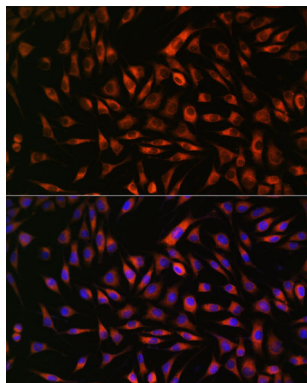
Description

Product Name	EML4 Rabbit Polyclonal Antibody
Host Species	Rabbit
Clonality	Polyclonal
Isotype	IgG
Purification	Affinity purification
Applications	WB,IHC,IF
Species Reactivity	Human,Mouse,Rat
Immunogen Description	Recombinant fusion protein of human EML4 (NP_061936.2).
Other Names	EML4;C2orf2;ELP120;EMAP-4;EMAPL4;ROPP120
Accession No.	Swiss Prot:Q9HC35GeneID:27436
Calculated MW	102kDa/108kDa
Formulation	Buffer: PBS with 0.02% sodium azide,50% glycerol,pH7.3.
Storage	Store at -20°C. Avoid freeze / thaw cycles.

Application Details

WB □ 1:500 - 1:2000 IHC □ 1:50 - 1:200 IF □ 1:50 - 1:200

Images



Immunofluorescence analysis of L929 cells using EML4 at dilution of 1:100. Blue: DAPI for nuclear staining.

Background

This gene is a member of the echinoderm microtubule associated protein-like family. The encoded WD-repeat protein may be involved in microtubule formation. Abnormal fusion of parts of this gene with portions of the anaplastic lymphoma receptor tyrosine kinase gene, which generates EML4-ALK fusion transcripts, is one of the primary mutations associated with non-small cell lung cancer. Alternative splicing of this gene results in two transcript variants.

Note: This product is for in vitro research use only and is not intended for use in humans or animals.