

## VHL Rabbit Polyclonal Antibody

Catalog No: #54173

Package Size: #54173-1 50ul #54173-2 100ul

Orders: order@signalwayantibody.com

Support: tech@signalwayantibody.com

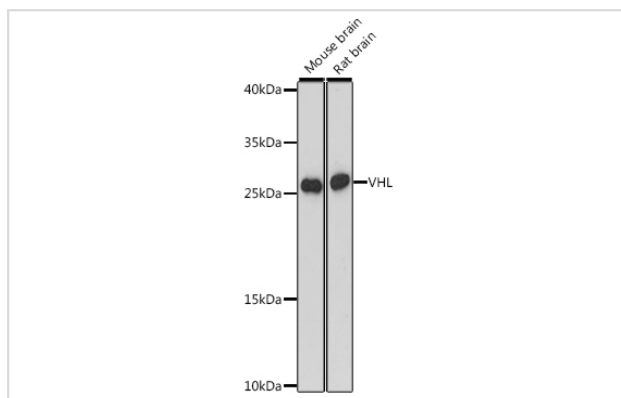
## Description

Product Name	VHL Rabbit Polyclonal Antibody
Host Species	Rabbit
Clonality	Polyclonal
Isotype	IgG
Purification	Affinity purification
Applications	WB,IHC,IF
Species Reactivity	Mouse,Rat
Immunogen Description	A synthetic peptide of human VHL (NP_937799.1).
Other Names	VHL;HRCA1;RCA1;VHL1;pVHL;PVHL
Accession No.	Swiss Prot:P40337GeneID:7428
Calculated MW	18kDa/19kDa/24kDa
SDS-PAGE MW	24kDa
Formulation	Buffer: PBS with 0.02% sodium azide,50% glycerol,pH7.3.
Storage	Store at -20°C. Avoid freeze / thaw cycles.

## Application Details

WB □ 1:500 - 1:2000 IHC □ 1:50 - 1:200 IF □ 1:50 - 1:200

## Images



Western blot analysis of extracts of various cell lines, using VHL at 1:3000 dilution.

## Background

Von Hippel-Lindau syndrome (VHL) is a dominantly inherited familial cancer syndrome predisposing to a variety of malignant and benign tumors. A germline mutation of this gene is the basis of familial inheritance of VHL syndrome. The protein encoded by this gene is a component of the protein complex that includes elongin B, elongin C, and cullin-2, and possesses ubiquitin ligase E3 activity. This protein is involved in the ubiquitination and degradation of hypoxia-inducible-factor (HIF), which is a transcription factor that plays a central role in the regulation of gene expression by oxygen. RNA polymerase II subunit POLR2G/RPB7 is also reported to be a target of this protein. Alternatively spliced transcript variants encoding distinct isoforms have been observed.

---

Note: This product is for in vitro research use only and is not intended for use in humans or animals.