

# NAV2 Rabbit Polyclonal Antibody

Catalog No: #54176



Package Size: #54176-1 50ul #54176-2 100ul

Orders: [order@signalwayantibody.com](mailto:order@signalwayantibody.com)

Support: [tech@signalwayantibody.com](mailto:tech@signalwayantibody.com)

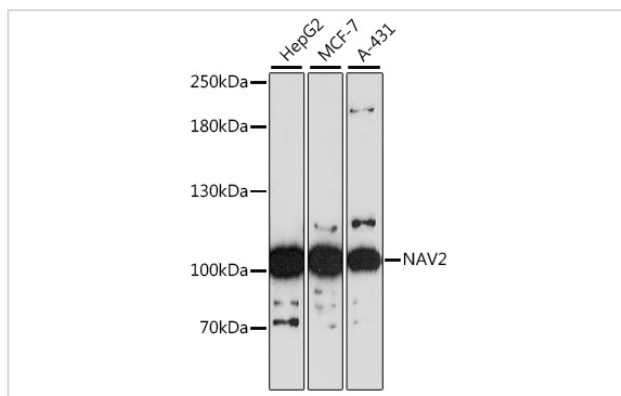
## Description

Product Name	NAV2 Rabbit Polyclonal Antibody
Host Species	Rabbit
Clonality	Polyclonal
Isotype	IgG
Purification	Affinity purification
Applications	WB,IHC,IF
Species Reactivity	Human
Immunogen Description	Recombinant fusion protein of human NAV2 (NP_660093.2).
Other Names	NAV2;HELAD1;POMFIL2;RAINB1;STEERIN2;UNC53H2
Accession No.	Swiss Prot:Q8IVL1GenelD:89797
Calculated MW	268kDa
SDS-PAGE MW	100kDa
Formulation	Buffer: PBS with 0.02% sodium azide,50% glycerol,pH7.3.
Storage	Store at -20°C. Avoid freeze / thaw cycles.

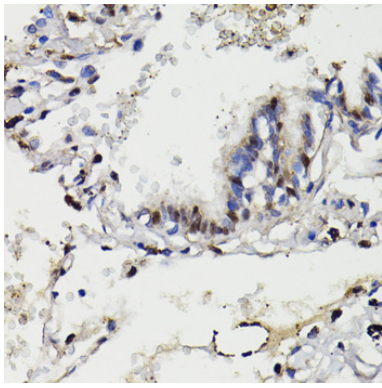
## Application Details

WB □ 1:500 - 1:2000 IHC □ 1:50 - 1:100 IF □ 1:50 - 1:100

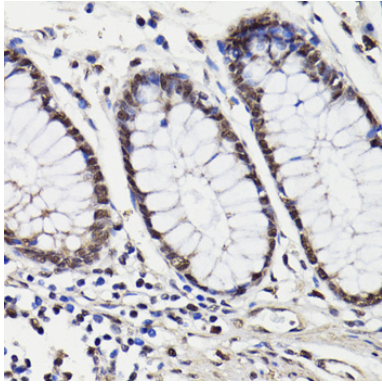
## Images



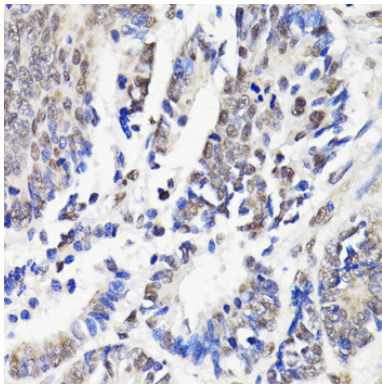
Western blot analysis of extracts of various cell lines, using NAV2 at 1:3000 dilution.



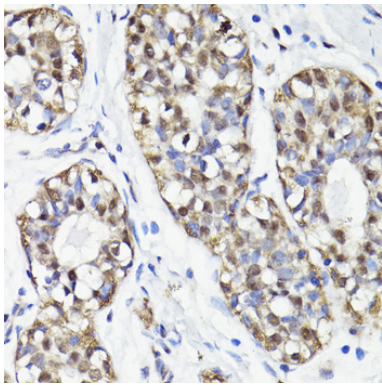
Immunohistochemistry of paraffin-embedded human lung using NAV2 at dilution of 1:100 (40x lens).



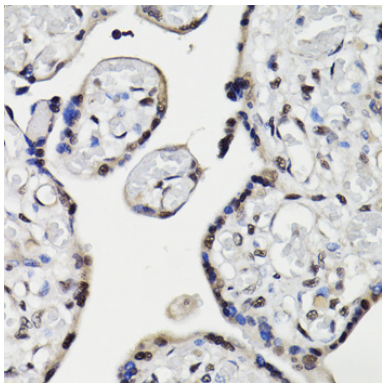
Immunohistochemistry of paraffin-embedded human colon using NAV2 at dilution of 1:100 (40x lens).



Immunohistochemistry of paraffin-embedded human colon carcinoma using NAV2 at dilution of 1:100 (40x lens).



Immunohistochemistry of paraffin-embedded human breast cancer using NAV2 at dilution of 1:100 (40x lens).



Immunohistochemistry of paraffin-embedded human placenta using NAV2 at dilution of 1:100 (40x lens).

## Background

---

This gene encodes a member of the neuron navigator gene family, which may play a role in cellular growth and migration. Multiple transcript variants encoding different isoforms have been found for this gene.

---

Note: This product is for in vitro research use only and is not intended for use in humans or animals.