

## Egr4 Rabbit Polyclonal Antibody

Catalog No: #54196

Package Size: #54196-1 50ul #54196-2 100ul

Orders: [order@signalwayantibody.com](mailto:order@signalwayantibody.com)Support: [tech@signalwayantibody.com](mailto:tech@signalwayantibody.com)

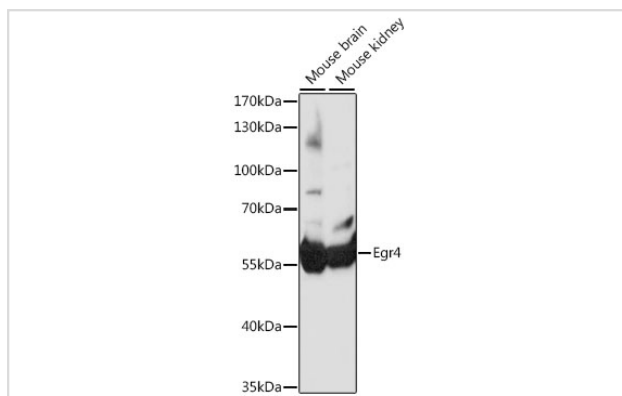
## Description

|                       |   |
|-----------------------|---|
| Product Name          | Egr4 Rabbit Polyclonal Antibody                         |
| Host Species          | Rabbit  |
| Clonality             | Polyclonal  |
| Isotype               | IgG   |
| Purification          | Affinity purification                                   |
| Applications          | WB,IHC  |
| Species Reactivity    | Human,Mouse,Rat   |
| Immunogen Description | Recombinant fusion protein of mouse Egr4 (NP_065621.1). |
| Other Names           | EGR4;NGFI-C;NGFIC;PAT133;NGF1-C;pAT133;Egr4             |
| Accession No.         | Swiss Prot:Q05215GeneID:13656                           |
| Calculated MW         | 61kDa   |
| SDS-PAGE MW           | 58kDa   |
| Formulation           | Buffer: PBS with 0.02% sodium azide,50% glycerol,pH7.3. |
| Storage               | Store at -20°C. Avoid freeze / thaw cycles.             |

## Application Details

WB □ 1:500 - 1:2000 IHC □ 1:100 - 1:200

## Images



Western blot analysis of extracts of various cell lines, using Egr4 at 1:1000 dilution.

## Background

---

Note: This product is for in vitro research use only and is not intended for use in humans or animals.