

ZFX Rabbit Polyclonal Antibody

Catalog No: #54221

Package Size: #54221-1 50ul #54221-2 100ul

Orders: order@signalwayantibody.com

Support: tech@signalwayantibody.com

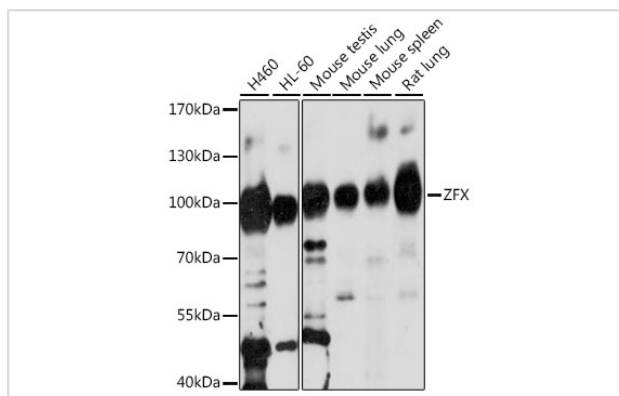
Description

Product Name	ZFX Rabbit Polyclonal Antibody
Host Species	Rabbit
Clonality	Polyclonal
Isotype	IgG
Purification	Affinity purification
Applications	WB,IHC
Species Reactivity	Human,Mouse,Rat
Immunogen Description	Recombinant fusion protein of human ZFX (NP_003401.2).
Other Names	ZFX;ZNF926
Accession No.	Swiss Prot:P17010GenelD:7543
Calculated MW	66kDa/90kDa/94kDa
SDS-PAGE MW	110kDa
Formulation	Buffer: PBS with 0.02% sodium azide,50% glycerol,pH7.3.
Storage	Store at -20°C. Avoid freeze / thaw cycles.

Application Details

WB □ 1:500 - 1:2000 IHC □ 1:100 - 1:200

Images



Western blot analysis of extracts of various cell lines, using ZFX at 1:1000 dilution.

Background

This gene on the X chromosome is structurally similar to a related gene on the Y chromosome. It encodes a member of the krueppel C2H2-type zinc-finger protein family. The full-length protein contains an acidic transcriptional activation domain (AD), a nuclear localization sequence (NLS) and a DNA binding domain (DBD) consisting of 13 C2H2-type zinc fingers. Studies in mouse embryonic and adult hematopoietic stem cells showed that this gene was required as a transcriptional regulator for self-renewal of both stem cell types, but it was dispensable for growth and differentiation of their progeny. Multiple alternatively spliced transcript variants encoding different isoforms have been identified, but the full-length nature of some variants has not been determined.

Note: This product is for in vitro research use only and is not intended for use in humans or animals.