

NUP210 Rabbit Polyclonal Antibody

Catalog No: #54259



Package Size: #54259-1 50ul #54259-2 100ul

Orders: order@signalwayantibody.com

Support: tech@signalwayantibody.com

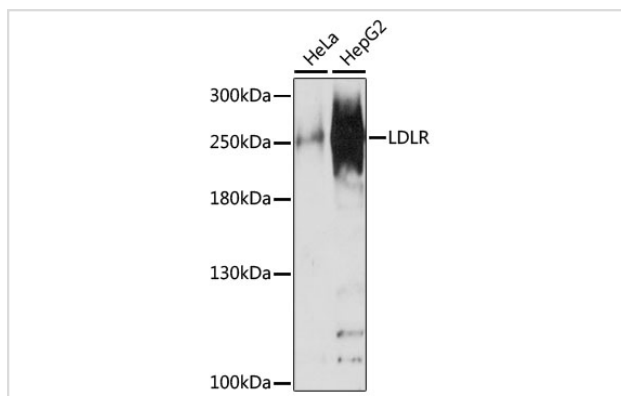
Description

Product Name	NUP210 Rabbit Polyclonal Antibody
Host Species	Rabbit
Clonality	Polyclonal
Isotype	IgG
Purification	Affinity purification
Applications	WB,IF
Species Reactivity	Human,Mouse,Rat
Immunogen Description	Recombinant fusion protein of human NUP210 (NP_079199.2).
Other Names	NUP210;GP210;POM210
Accession No.	Swiss Prot:Q8TEM1GeneID:23225
Calculated MW	205kDa
SDS-PAGE MW	250kDa
Formulation	Buffer: PBS with 0.02% sodium azide,50% glycerol,pH7.3.
Storage	Store at -20°C. Avoid freeze / thaw cycles.

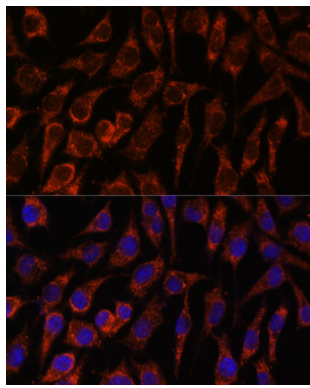
Application Details

WB □ 1:1000 - 1:2000 IF □ 1:50 - 1:200

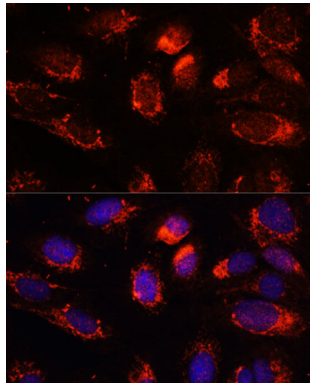
Images



Western blot analysis of extracts of various cell lines, using NUP210 at 1:1000 dilution.



Immunofluorescence analysis of L929 cells using NUP210 at dilution of 1:100. Blue: DAPI for nuclear staining.



Immunofluorescence analysis of U-2 OS cells using NUP210 at dilution of 1:100. Blue: DAPI for nuclear staining.

Background

The nuclear pore complex is a massive structure that extends across the nuclear envelope, forming a gateway that regulates the flow of macromolecules between the nucleus and the cytoplasm. Nucleoporins are the main components of the nuclear pore complex in eukaryotic cells. The protein encoded by this gene is a membrane-spanning glycoprotein that is a major component of the nuclear pore complex. Multiple pseudogenes related to this gene are located on chromosome 3.

Note: This product is for in vitro research use only and is not intended for use in humans or animals.