

E2F1 Rabbit Polyclonal Antibody

Catalog No: #54268

Package Size: #54268-1 50ul #54268-2 100ul

Orders: order@signalwayantibody.com

Support: tech@signalwayantibody.com

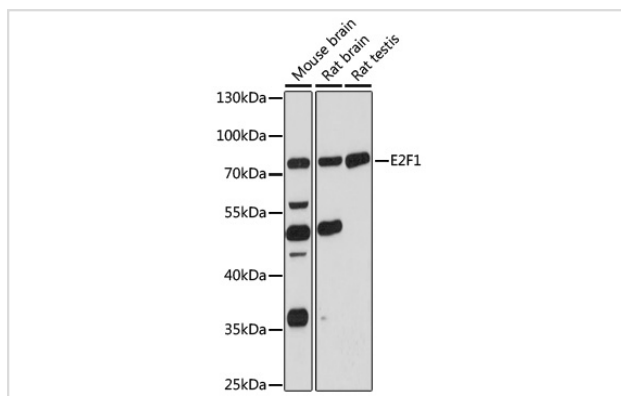
Description

Product Name	E2F1 Rabbit Polyclonal Antibody
Host Species	Rabbit
Clonality	Polyclonal
Isotype	IgG
Purification	Affinity purification
Applications	WB,IF
Species Reactivity	Human,Mouse,Rat
Immunogen Description	A synthetic peptide of human E2F1
Other Names	E2F-1;RBAP1;RBBP3;RBP3;E2F1
Accession No.	Swiss Prot:Q01094GeneID:1869
Calculated MW	46kDa
SDS-PAGE MW	70kDa
Formulation	Buffer: PBS with 0.02% sodium azide,50% glycerol,pH7.3.
Storage	Store at -20°C. Avoid freeze / thaw cycles.

Application Details

WB □ 1:500 - 1:1000 IF □ 1:20 - 1:100

Images



Western blot analysis of extracts of various cell lines, using E2F1 at 1:1000 dilution.

Background

The protein encoded by this gene is a member of the E2F family of transcription factors. The E2F family plays a crucial role in the control of cell cycle and action of tumor suppressor proteins and is also a target of the transforming proteins of small DNA tumor viruses. The E2F proteins contain several evolutionally conserved domains found in most members of the family. These domains include a DNA binding domain, a dimerization domain which determines interaction with the differentiation regulated transcription factor proteins (DP), a transactivation domain enriched in acidic amino acids, and a tumor suppressor protein association domain which is embedded within the transactivation domain. This protein and another 2 members, E2F2 and E2F3, have an additional cyclin binding domain. This protein binds preferentially to retinoblastoma protein pRB in a cell-cycle dependent manner. It

can mediate both cell proliferation and p53-dependent/independent apoptosis.

Note: This product is for in vitro research use only and is not intended for use in humans or animals.