

USP18 Rabbit Polyclonal Antibody

Catalog No: #54276



Package Size: #54276-1 50ul #54276-2 100ul

Orders: order@signalwayantibody.com

Support: tech@signalwayantibody.com

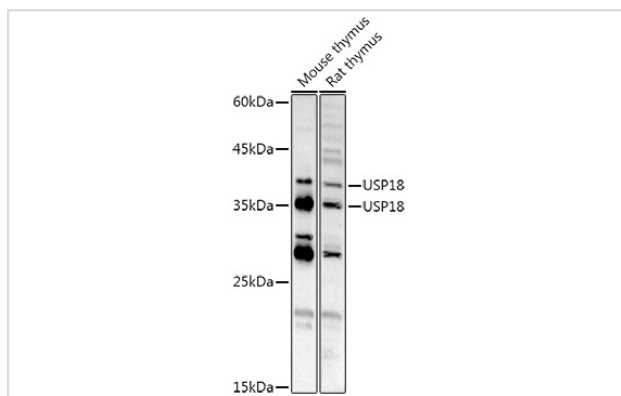
Description

Product Name	USP18 Rabbit Polyclonal Antibody
Host Species	Rabbit
Clonality	Polyclonal
Isotype	IgG
Purification	Affinity purification
Applications	WB,IHC,IF
Species Reactivity	Human,Mouse,Rat
Immunogen Description	Recombinant fusion protein of human USP18 (NP_059110.2).
Other Names	USP18;ISG43;UBP43;PTORCH2
Accession No.	Uniprot:Q9UMW8GeneID:11274
Calculated MW	43kDa
SDS-PAGE MW	34KDa/39KDa
Formulation	PBS with 0.02% sodium azide,50% glycerol,pH7.3.
Storage	Store at -20°C. Avoid freeze / thaw cycles.

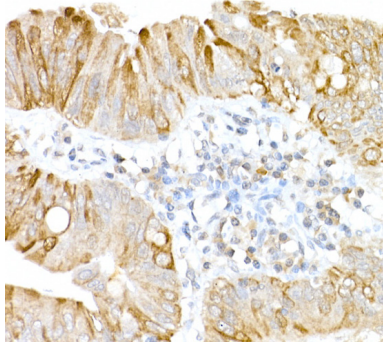
Application Details

WB □ 1:500 - 1:2000 IHC □ 1:50 - 1:200 IF □ 1:50 - 1:200

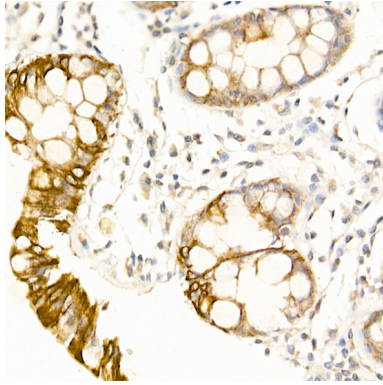
Images



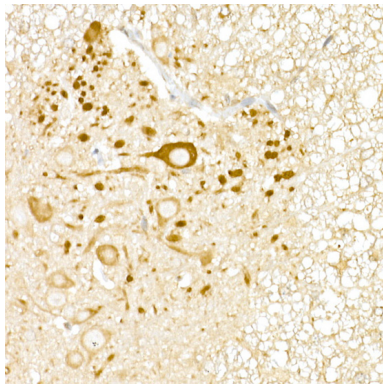
Western blot analysis of extracts of various cell lines, using USP18 antibody.



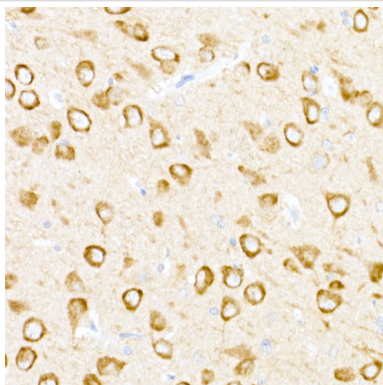
Immunohistochemistry of paraffin-embedded human colon carcinoma using USP18 Rabbit pAb.



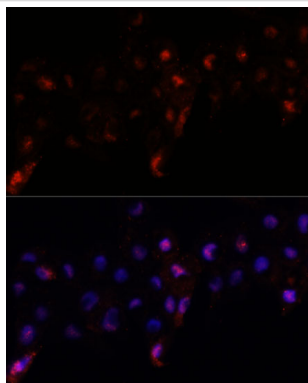
Immunohistochemistry of paraffin-embedded human colon using USP18 Rabbit pAb.



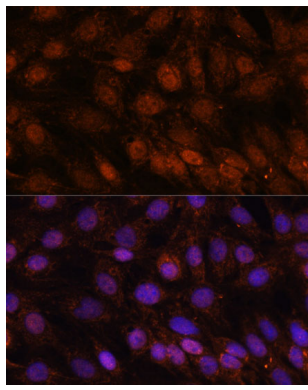
Immunohistochemistry of paraffin-embedded mouse spinal cord using USP18 Rabbit pAb.



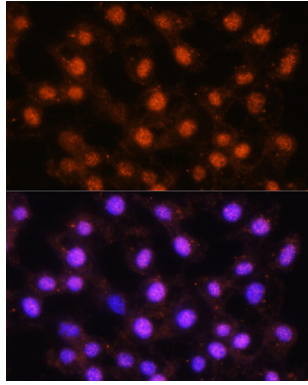
Immunohistochemistry of paraffin-embedded rat brain using USP18 Rabbit pAb.



Immunofluorescence analysis of A431 cells using USP18 antibody.



Immunofluorescence analysis of C6 cells using USP18 antibody.



Immunofluorescence analysis of L929 cells using USP18 antibody.

Background

The protein encoded by this gene belongs to the ubiquitin-specific proteases (UBP) family of enzymes that cleave ubiquitin from ubiquitinated protein substrates. It is highly expressed in liver and thymus, and is localized to the nucleus. This protein efficiently cleaves only ISG15 (a ubiquitin-like protein) fusions, and deletion of this gene in mice results in a massive increase of ISG15 conjugates in tissues, indicating that this protein is a major ISG15-specific protease. Mice lacking this gene are also hypersensitive to interferon, suggesting a function of this protein in downregulating interferon responses, independent of its isopeptidase activity towards ISG15.

Note: This product is for in vitro research use only and is not intended for use in humans or animals.