

## E-Cadherin Rabbit Polyclonal Antibody

Catalog No: #54294

Package Size: #54294-1 50ul #54294-2 100ul

Orders: [order@signalwayantibody.com](mailto:order@signalwayantibody.com)Support: [tech@signalwayantibody.com](mailto:tech@signalwayantibody.com)

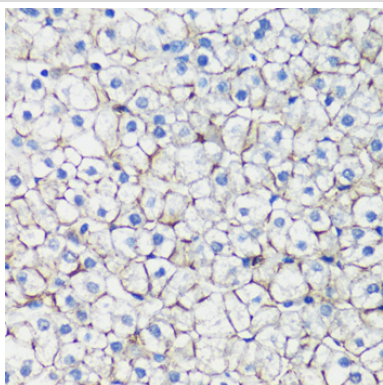
## Description

Product Name	E-Cadherin Rabbit Polyclonal Antibody
Host Species	Rabbit
Clonality	Polyclonal
Isotype	IgG
Purification	Affinity purification
Applications	WB,IHC
Species Reactivity	Human,Mouse,Rat
Immunogen Description	Recombinant protein of human CDH1.
Other Names	Arc-1;CD324;CDHE;ECAD;LCAM;UVO;CDH1;E-Cadherin
Accession No.	Swiss Prot:P12830GeneID:999
Calculated MW	90kDa/97kDa
Formulation	Buffer: PBS with 0.02% sodium azide,50% glycerol,pH7.3.
Storage	Store at -20°C. Avoid freeze / thaw cycles.

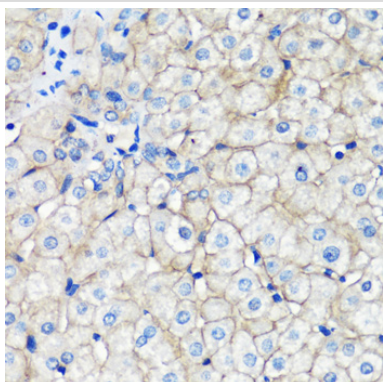
## Application Details

WB □ 1:500 - 1:2000 IHC □ 1:50 - 1:200

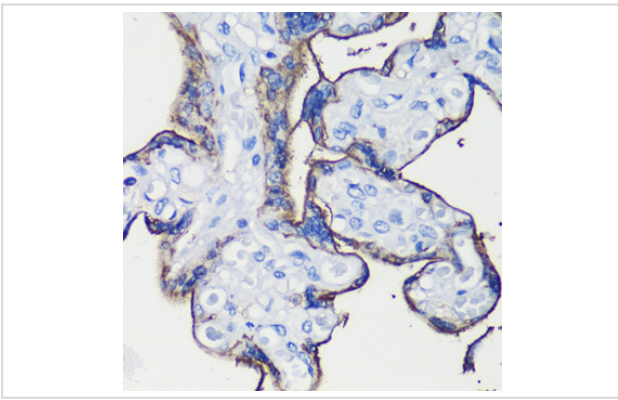
## Images



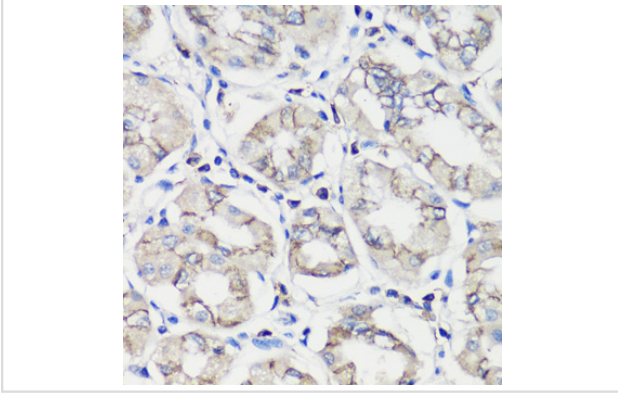
Immunohistochemistry of paraffin-embedded human liver using E-Cadherin at dilution of 1:200 (40x lens).



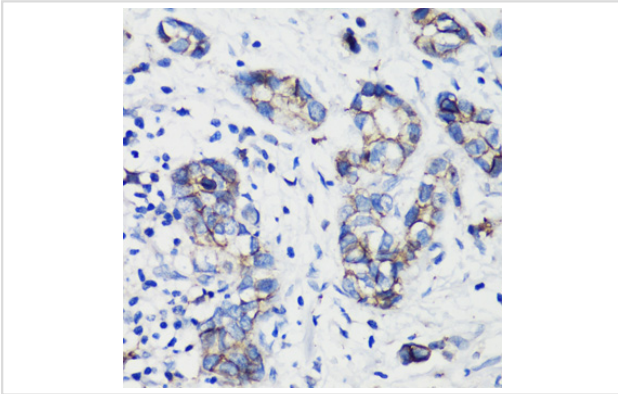
Immunohistochemistry of paraffin-embedded human liver cancer using E-Cadherin at dilution of 1:200 (40x lens).



Immunohistochemistry of paraffin-embedded human placenta using E-Cadherin at dilution of 1:200 (40x lens).



Immunohistochemistry of paraffin-embedded human stomach using E-Cadherin at dilution of 1:200 (40x lens).



Immunohistochemistry of paraffin-embedded human gastric cancer using E-Cadherin at dilution of 1:200 (40x lens).

## Background

This gene encodes a classical cadherin of the cadherin superfamily. Alternative splicing results in multiple transcript variants, at least one of which encodes a preproprotein that is proteolytically processed to generate the mature glycoprotein. This calcium-dependent cell-cell adhesion protein is comprised of five extracellular cadherin repeats, a transmembrane region and a highly conserved cytoplasmic tail. Mutations in this gene are correlated with gastric, breast, colorectal, thyroid and ovarian cancer. Loss of function of this gene is thought to contribute to cancer progression by increasing proliferation, invasion, and/or metastasis. The ectodomain of this protein mediates bacterial adhesion to mammalian cells and the cytoplasmic domain is required for internalization. This gene is present in a gene cluster with other members of the cadherin family on chromosome 16.

Note: This product is for in vitro research use only and is not intended for use in humans or animals.