

MAPK14 Rabbit Polyclonal Antibody

Catalog No: #54299

Package Size: #54299-1 50ul #54299-2 100ul

Orders: order@signalwayantibody.comSupport: tech@signalwayantibody.com

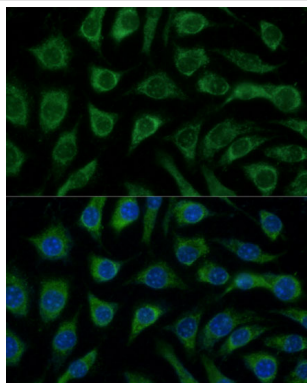
Description

Product Name	MAPK14 Rabbit Polyclonal Antibody
Host Species	Rabbit
Clonality	Polyclonal
Isotype	IgG
Purification	Affinity purification
Applications	WB,IHC,IF
Species Reactivity	Human,Mouse,Rat
Immunogen Description	A synthetic peptide of human p38 MAPK (NP_620581.1).
Other Names	MAPK14;CSBP;CSBP1;CSBP2;CSPB1;EXIP;Mxi2;PRKM14;PRKM15;RK;SAPK2A;p38;p38ALPHA;p38 MAPK
Accession No.	Uniprot:Q16539GeneID:1432
Calculated MW	29kDa/34kDa/35kDa/41kDa
SDS-PAGE MW	41kDa
Formulation	PBS with 0.02% sodium azide,50% glycerol,pH7.3.
Storage	Store at -20°C. Avoid freeze / thaw cycles.

Application Details

WB □ 1:500 - 1:2000 IHC □ 1:50 - 1:200 IF □ 1:50 - 1:200

Images



Immunofluorescence analysis of L929 cells using p38 antibody.

Background

The protein encoded by this gene is a member of the MAP kinase family. MAP kinases act as an integration point for multiple biochemical signals, and are involved in a wide variety of cellular processes such as proliferation, differentiation, transcription regulation and development. This kinase is activated by various environmental stresses and proinflammatory cytokines. The activation requires its phosphorylation by MAP kinase kinases (MKKs), or its autophosphorylation triggered by the interaction of MAP3K7IP1/TAB1 protein with this kinase. The substrates of this kinase include

transcription regulator ATF2, MEF2C, and MAX, cell cycle regulator CDC25B, and tumor suppressor p53, which suggest the roles of this kinase in stress related transcription and cell cycle regulation, as well as in genotoxic stress response. Four alternatively spliced transcript variants of this gene encoding distinct isoforms have been reported.

Note: This product is for in vitro research use only and is not intended for use in humans or animals.