

ZEB1 Rabbit Polyclonal Antibody

Catalog No: #54338



Package Size: #54338-1 50ul #54338-2 100ul

Orders: order@signalwayantibody.comSupport: tech@signalwayantibody.com

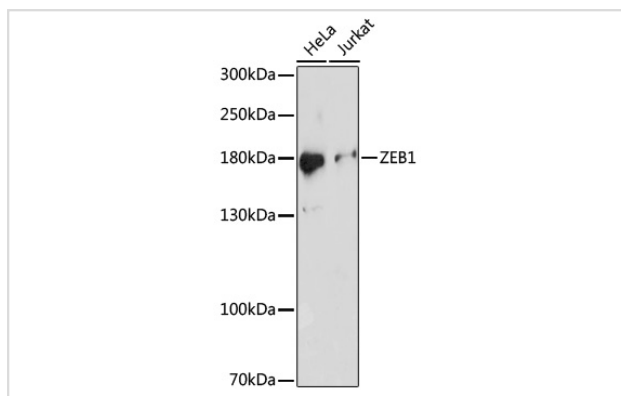
Description

Product Name	ZEB1 Rabbit Polyclonal Antibody
Host Species	Rabbit
Clonality	Polyclonal
Isotype	IgG
Purification	Affinity purification
Applications	WB,IHC,IF
Species Reactivity	Human,Mouse,Rat
Immunogen Description	A synthetic peptide of human ZEB1.
Other Names	ZEB1;AREB6;BZP;DELTAEF1;FECD6;NIL2A;PPCD3;TCF8;ZFHEP;ZFHX1A
Accession No.	Swiss Prot:P37275GeneID:6935
Calculated MW	116kDa/122kDa/124kDa
SDS-PAGE MW	180kDa
Formulation	Buffer: PBS with 0.02% sodium azide,50% glycerol,pH7.3.
Storage	Store at -20°C. Avoid freeze / thaw cycles.

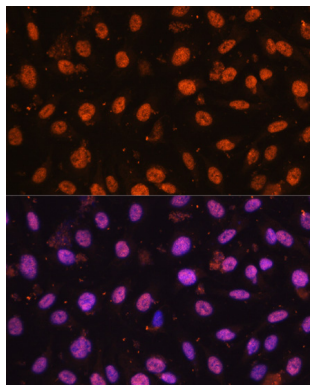
Application Details

WB □ 1:500 - 1:2000 IHC □ 1:50 - 1:200 IF □ 1:50 - 1:200

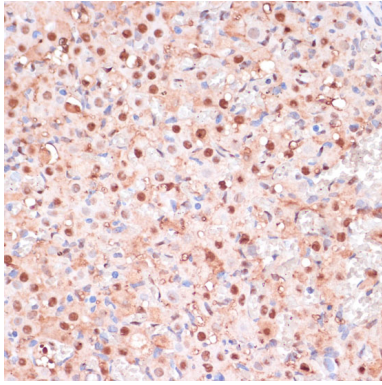
Images



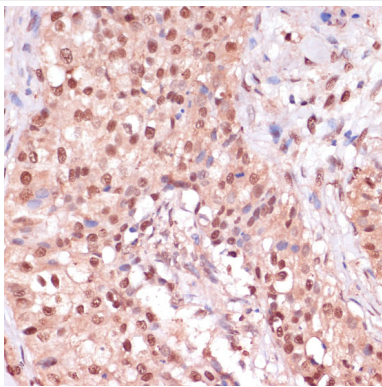
Western blot analysis of extracts of various cells, using ZEB1 at 1:1000 dilution.



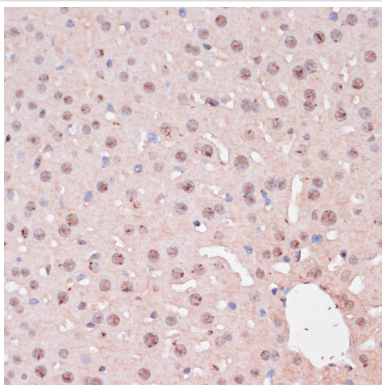
Immunofluorescence analysis of U2OS cells using ZEB1 at dilution of 1:100. Blue: DAPI for nuclear staining.



Immunohistochemistry of paraffin-embedded rat ovary using ZEB1 at dilution of 1:100 (40x lens).



Immunohistochemistry of paraffin-embedded human breast cancer using ZEB1 at dilution of 1:100 (40x lens).



Immunohistochemistry of paraffin-embedded mouse liver using ZEB1 at dilution of 1:100 (40x lens).

Background

This gene encodes a zinc finger transcription factor. The encoded protein likely plays a role in transcriptional repression of interleukin 2. Mutations in this gene have been associated with posterior polymorphous corneal dystrophy-3 and late-onset Fuchs endothelial corneal dystrophy. Alternatively spliced transcript variants encoding different isoforms have been described.

Note: This product is for in vitro research use only and is not intended for use in humans or animals.