

THY1 Rabbit Polyclonal Antibody

Catalog No: #54340



Package Size: #54340-1 50ul #54340-2 100ul

Orders: order@signalwayantibody.com

Support: tech@signalwayantibody.com

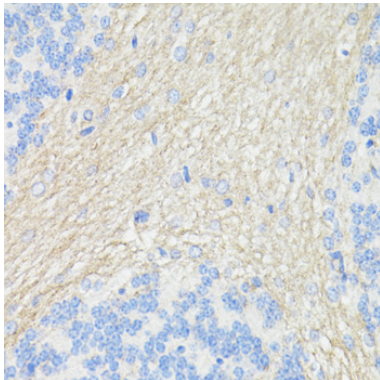
Description

Product Name	THY1 Rabbit Polyclonal Antibody
Host Species	Rabbit
Clonality	Polyclonal
Isotype	IgG
Purification	Affinity purification
Applications	WB,IHC
Species Reactivity	Mouse,Rat
Immunogen Description	A synthetic peptide of human THY1 (NP_006279.2).
Other Names	THY1;CD90;CDw90
Accession No.	Swiss Prot:P04216GeneID:7070
Calculated MW	17kDa
Formulation	Buffer: PBS with 0.02% sodium azide,50% glycerol,pH7.3.
Storage	Store at -20°C. Avoid freeze / thaw cycles.

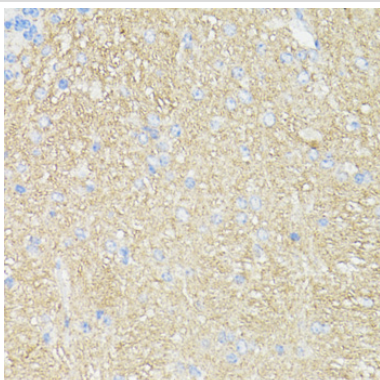
Application Details

WB □ 1:500 - 1:2000 IHC □ 1:50 - 1:200

Images



Immunohistochemistry of paraffin-embedded rat brain using THY1 at dilution of 1:100 (40x lens).



Immunohistochemistry of paraffin-embedded mouse brain using THY1 at dilution of 1:100 (40x lens).

Background

This gene encodes a cell surface glycoprotein and member of the immunoglobulin superfamily of proteins. The encoded protein is involved in cell adhesion and cell communication in numerous cell types, but particularly in cells of the immune and nervous systems. The encoded protein is widely used as a marker for hematopoietic stem cells. This gene may function as a tumor suppressor in nasopharyngeal carcinoma. Alternative splicing results in multiple transcript variants.

Note: This product is for in vitro research use only and is not intended for use in humans or animals.