

IL1 beta Rabbit Polyclonal Antibody

Catalog No: #54413



Package Size: #54413-1 50ul #54413-2 100ul

Orders: order@signalwayantibody.comSupport: tech@signalwayantibody.com

Description

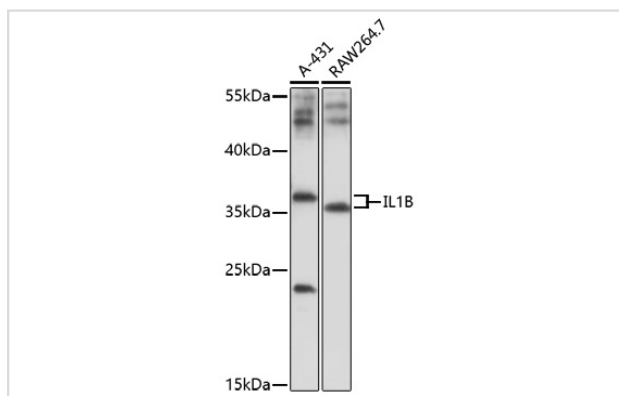
Product Name	IL1 beta Rabbit Polyclonal Antibody
Host Species	Rabbit
Clonality	Polyclonal
Isotype	IgG
Purification	Affinity purification
Applications	WB,IHC-P
Species Reactivity	Human,Mouse,Rat
Immunogen Description	Recombinant protein of human IL1 beta.
Other Names	IL-1;IL1-BETA;IL1F2;IL1 beta;IL1B
Accession No.	Swiss Prot:P01584GeneID:3553
Calculated MW	31kDa
SDS-PAGE MW	31kDa
Formulation	Buffer: PBS with 0.02% sodium azide,50% glycerol,pH7.3.
Storage	Store at -20°C. Avoid freeze / thaw cycles.

Application Details

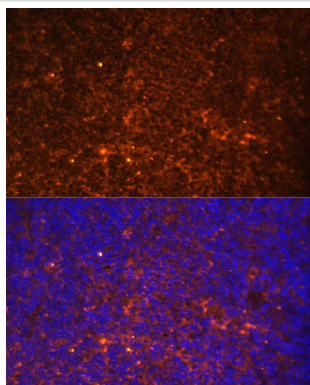
WB 1:500 - 1:1000

IHC-P 1:50 - 1:200

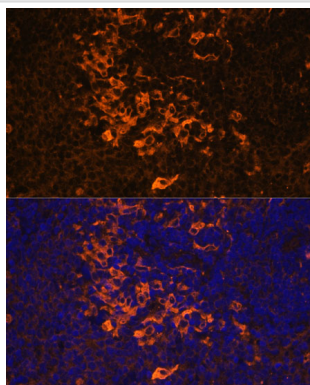
Images



Western blot analysis of extracts of various cells, using IL1 beta at 1:1000 dilution.



Immunofluorescence analysis of mouse spleen using IL1 beta at dilution of 1:100. Blue: DAPI for nuclear staining.



Immunofluorescence analysis of rat spleen using IL1 beta at dilution of 1:100. Blue: DAPI for nuclear staining.

Background

The protein encoded by this gene is a member of the interleukin 1 cytokine family. This cytokine is produced by activated macrophages as a proprotein, which is proteolytically processed to its active form by caspase 1 (CASP1/ICE). This cytokine is an important mediator of the inflammatory response, and is involved in a variety of cellular activities, including cell proliferation, differentiation, and apoptosis. The induction of cyclooxygenase-2 (PTGS2/COX2) by this cytokine in the central nervous system (CNS) is found to contribute to inflammatory pain hypersensitivity. This gene and eight other interleukin 1 family genes form a cytokine gene cluster on chromosome 2.

Note: This product is for in vitro research use only and is not intended for use in humans or animals.