

## MYOG Rabbit Polyclonal Antibody

Catalog No: #54416



Package Size: #54416-1 50ul #54416-2 100ul

Orders: [order@signalwayantibody.com](mailto:order@signalwayantibody.com)Support: [tech@signalwayantibody.com](mailto:tech@signalwayantibody.com)

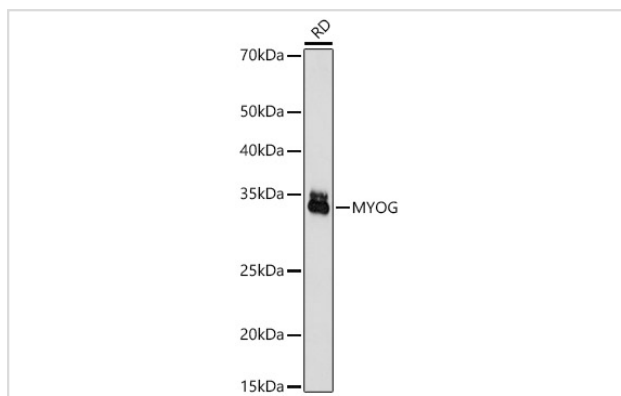
## Description

Product Name	MYOG Rabbit Polyclonal Antibody
Host Species	Rabbit
Clonality	Polyclonal
Isotype	IgG
Purification	Affinity purification
Applications	WB,IF
Species Reactivity	Human,Mouse,Rat
Immunogen Description	Recombinant fusion protein of human MYOG (NP_002470.2).
Other Names	MYOG;MYF4;bHLHc3;myf-4;myogenin;Myogenin
Accession No.	Uniprot:P15173GeneID:4656
Calculated MW	25kDa
SDS-PAGE MW	34KDa
Formulation	PBS with 0.02% sodium azide,50% glycerol,pH7.3.
Storage	Store at -20°C. Avoid freeze / thaw cycles.

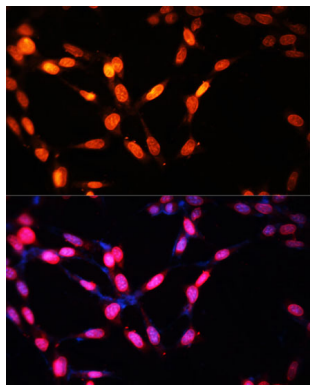
## Application Details

WB □ 1:500 - 1:2000 IF □ 1:50 - 1:200

## Images



Western blot analysis of extracts of RD cells, using MYOG antibody.



Immunofluorescence analysis of NIH/3T3 cells using MYOG antibody.

## Background

Myogenin is a muscle-specific transcription factor that can induce myogenesis in a variety of cell types in tissue culture. It is a member of a large family of proteins related by sequence homology, the helix-loop-helix (HLH) proteins. It is essential for the development of functional skeletal muscle.

Note: This product is for in vitro research use only and is not intended for use in humans or animals.